

P90-14-XLH-RR

Dual Broadband Antennas

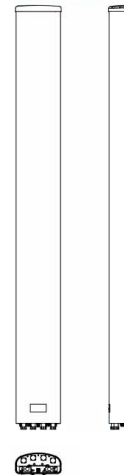
POLARIZATION: Dual Linear $\pm 45^\circ$
 FREQUENCY (MHz): 698-894, 1710-2170
 HORIZONTAL BEAM WIDTH ($^\circ$): 85,85
 GAIN (dBi/dBd): 13.7/11.6 15.7/13.6
 TILT: 0-13, 0-8
 LENGTH: 48"

ELECTRICAL SPECIFICATIONS*

Frequency range (MHz)	698-894		1710-2170		
	698-806	806-894	1710-1880	1850-1990	1900-2170
Frequency band (MHz)	698-806	806-894	1710-1880	1850-1990	1900-2170
Gain (dBi/dBd)	13.0/10.9	13.7/11.6	15.1/13.0	15.4/13.3	15.7/13.6
Polarization	Dual Linear +/- 45		Dual Linear +/- 45		
Nominal Impedance (Ω)	50		50		
VSWR	< 1.5:1		< 1.5:1		
Horizontal beam width, -3 dB ($^\circ$)	86	83	85	84	85
Vertical beam width, -3 dB ($^\circ$)	15.0		7.0		
Electrical down tilt ($^\circ$)	0-13		0-8		
Side lobe suppression, vertical 1st upper (dB)	> 12		> 16		
Isolation between inputs (dB)	> 30		> 28		
Inter band Isolation (dB)	> 40		> 28		
Tracking, horizontal plane $\pm 60^\circ$ (dB)	< 2		< 2		
Vertical beam squint ($^\circ$)	< 1.25		< 0.5		
Front to back ratio (dB) $180^\circ \pm 30^\circ$ copolar	> 25		> 25		
Front to back ratio (dB) $180^\circ \pm 30^\circ$ total power	> 22		> 22		
Cross polar discrimination (XPD) 0° (dB)	> 10		> 15		
Cross polar discrimination (XPD) $\pm 60^\circ$ (dB)	> 10		> 10		
IM3, 2xTx@43dBm (dBc)	-153		-153		
Power handling, average per input (W)	500		300		
Power handling, average total (W)	1000		600		

MECHANICAL SPECIFICATIONS*

Connector	4 x 7/16 DIN Female, IP67
Connector position	Bottom
Dimensions, HxWxD, in (mm)	48" x 12" x 7.3" (1219 x 305 x 186)
Mounting	Pre-mounted Tilt Brackets
Weight, with brackets, lbs (kg)	41 (19)
Weight, without brackets, lbs (kg)	30 (14)
Wind load, frontal/lateral/rear side 42 m/s Cd=1.0 (N)	920
Maximum operational wind speed, mph (m/s)	100 (45)
Survival wind speed, mph (m/s)	150 (67)
Lightning protection	DC Ground
Operating Temperature	-40C to +60C
Radome material	PVC, IP55
Packet size, HxWxD, in (mm)	60" x 16" x 10" (1524 x 400 x 255)
Radome colour	Light Grey
Shipping weight, lbs (kg)	52 (24)
RET	iRET AISGv1.1, MET and AISGv2.0 Available
Brackets	7256.00, 7454.00, 2210.00



*All specifications subject to change without notice. Please contact your Powerwave representative for complete performance data.

ANTENNA PATTERNS*

For detailed patterns visit <http://www.powerwave.com/rpa/>.