

P65-18-XXW2-MM**i-RET ANTENNA DVHBB65 1.2m WXCM-2300-2690-65-18i/18i-Ai-D**

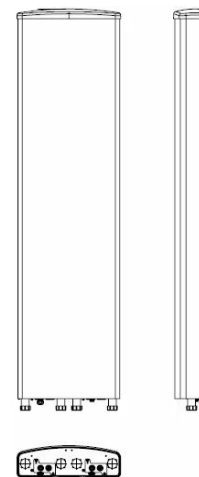
POLARIZATION: XX-Pol
 FREQUENCY (MHz): 2300-2690**
 HORIZONTAL BEAM WIDTH (°): 65
 GAIN (dBi/dBd): 18.0/15.9
 TILT: 0-10°
 LENGTH: 1.2m(48")

ELECTRICAL SPECIFICATIONS*

Frequency range (MHz)	2300-2690**
Frequency band (MHz)	2300-2690
Gain (dBi/dBd)	18.0/15.9
Polarization	2 x Dual Linear ±45°
Nominal Impedance (Ω)	50
VSWR	<1.5:1
Horizontal beam width, -3 dB (°)	65
Vertical beam width, -3 dB (°)	5.5
Electrical down tilt (°)	0-10
Side lobe suppression, vertical 1st upper (dB)	<18,16,15 @ 0.5,10°
Isolation between inputs (dB)	>30
Inter band Isolation (dB)	n.a.
Tracking, horizontal plane ±60° (dB)	<-2.0
First null fill (dB)	>-24, typical >-18
Vertical beam squint (°)	0.5
Front to back ratio (dB)	>27
Front to back ratio, total power (dB)	>25
Cross polar discrimination (XPD) 0° (dB)	>15
Cross polar discrimination (XPD) ±60° (dB)	>10
Far field coupling	n.a.
IM3, 2xTx@43dBm (dBc)	<-153
Power handling, average per input (W)	250
Power handling, average total (W)	1000

MECHANICAL SPECIFICATIONS*

Connector	4x7/16 DIN Female [no i-RET module attached]
Connector position	Bottom
Dimensions, HxWxD, mm (ft)	1209x343x89 (4'x1'1"x3")
Mounting	Pre-mounted heavy duty brackets [7456.00]
Weight, with brackets, kg (lbs)	16.0 (36.0)
Weight, without brackets, kg (lbs)	11.0 (24.0)
Wind load, frontal/lateral/rear side 42 m/s Cd=1.6 (N)	476 / 58 / 538
Maximum operational wind speed, m/s (mph)	42(93)
Survival wind speed, m/s (mph)	70(156)
Lightning protection	DC Grounded
Operating Temperature	
Radome material	ASA
Radome colour	Light Grey
Package size, HxWxD, mm (ft)	1430x400x200 (56"x16"x8")
Shipping weight, kg (lbs)	19.6(43)
Brackets	7256.00, 7454.00A, 7458.00A, 2210.10



*All specifications subject to change without notice. Please contact your Powerwave representative for complete performance data. **VSWR at 2300MHz is 1.55:1.

ANTENNA PATTERNS*

For detailed patterns visit <http://www.powerwave.com/rpa/>.