

P65-18-XW2-R**i-RET ANTENNA VHBB65 1.2m WXM-2300-2690-65-18i-Ai-D**

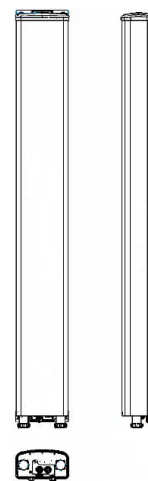
POLARIZATION: X-Pol
 FREQUENCY (MHz): 2300-2690**
 HORIZONTAL BEAM WIDTH (°): 65
 GAIN (dBi/dBd): 18.0/15.9
 TILT: 0-10°
 LENGTH: 1.2m(48")

ELECTRICAL SPECIFICATIONS*

Frequency range (MHz)	2300-2690**
Frequency band (MHz)	2300-2690
Gain (dBi/dBd)	18.0/15.9
Polarization	Dual Linear $\pm 45^\circ$
Nominal Impedance (Ω)	50
VSWR	<1.5:1
Horizontal beam width, -3 dB (°)	65
Vertical beam width, -3 dB (°)	5.5
Electrical down tilt (°)	0-10
Side lobe suppression, vertical 1st upper (dB)	<18,16,15 @ 0.5,10°
Isolation between inputs (dB)	>30
Inter band Isolation (dB)	n.a.
Tracking, horizontal plane $\pm 60^\circ$ (dB)	<-2.0
First null fill (dB)	>-24 Typical >-18
Vertical beam squint (°)	0.5
Front to back ratio (dB)	>27
Front to back ratio, total power (dB)	>25
Cross polar discrimination (XPD) 0° (dB)	>15
Cross polar discrimination (XPD) $\pm 60^\circ$ (dB)	>10
Far field coupling	n.a.
IM3, 2xTx@43dBm (dBc)	<-153
Power handling, average per input (W)	250
Power handling, average total (W)	500

MECHANICAL SPECIFICATIONS*

Connector	2x7/16 DIN Female 2xAISG [1x i-RET 8510.40]
Connector position	Bottom
Dimensions, HxWxD, mm (ft)	1219x167x89.5 (48"x6.5"x3.5")
Mounting	Pre-mounted standard brackets [7456.00A]
Weight, with brackets, kg (lbs)	10.0 (21)
Weight, without brackets, kg (lbs)	6.0 (13)
Wind load, frontal/lateral/rear side 42 m/s Cd=1.6 (N)	262 / 66 / 303
Maximum operational wind speed, m/s (mph)	42 (93)
Survival wind speed, m/s (mph)	55 (123)
Lightning protection	DC Grounded
Operating Temperature	
Radome material	ASA
Radome colour	Light Grey
Package size, HxWxD, mm (ft)	1480x200x200 (58"x8"x8")
Shipping weight, kg (lbs)	12.0 (27.0)
Brackets	7456.00A, 7455.00, 7458.00A, 2201.11



*All specifications subject to change without notice. Please contact your Powerwave representative for complete performance data. **VSWR at 2300MHz is 1.55:1.

ANTENNA PATTERNS*

For detailed patterns visit <http://www.powerwave.com/rpa/>.