

P65-18-XDHW2-N**Triple Broadband 790-960/1710-2170/2500-2690MHz**

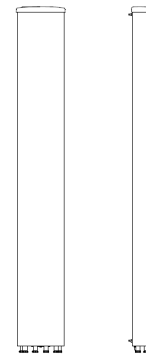
POLARIZATION: XXX-Pol
 FREQUENCY (MHz): 790-960, 1710-2170, 2500-2690
 HORIZONTAL BEAM WIDTH (°): 65
 GAIN (dBi dBd): 17.6/15.5, 17.8/15.7, 17.4/15.3
 TILT: 2-8°/2-10°/2-10°
 LENGTH: 2.7m(8'10")

ELECTRICAL SPECIFICATIONS*

| Frequency range (MHz) | 790-960 | | 1710-2170; 2500-2690 | | |
|--|-------------------|-------------------|----------------------|-------------------|-------------------|
| | 790-894 | 870-960 | 1710-1880 | 1900-2170 | 2500-2690 |
| Frequency band (MHz) | 790-894 | 870-960 | 1710-1880 | 1900-2170 | 2500-2690 |
| Gain (dBi/dBd) | 16.4/14.3 | 17.6/15.5 | 17.4/15.3 | 17.8/15.7 | 17.4/15.3 |
| Polarization | Dual linear ±45° | | Dual linear ±45° | | |
| Nominal Impedance (Ω) | 50 | | 50 | | |
| VSWR | <1.5:1 | | <1.5:1 | | |
| Horizontal beam width, -3 dB (°) | 72 | 67 | 63 | 60 | 62 |
| Vertical beam width, -3 dB (°) | 7.5 | 6.9 | 6.9 | 6.2 | 5.0 |
| Electrical down tilt (°) | 2 - 8 | | 2 - 10 | | |
| Side lobe suppression, vertical 1st upper (dB) | >15 | >15 | >15 | >15 | >15 |
| Isolation between inputs (dB) | >30 | >30 | >30 | >30 | >30 |
| Inter band Isolation (dB) | >30 | | >30 | | |
| Tracking, horizontal plane ±60° (dB) | - | - | - | - | - |
| First null fill (dB) | >-24 typical >-17 | >-24 typical >-17 | >-24 typical >-17 | >-24 typical >-17 | >-24 typical >-17 |
| Vertical beam squint (°) | - | - | - | - | - |
| Front to back ratio (dB) 180° ±30° copolar | >23 | >27 | >27 | >27 | >27 |
| Front to back ratio (dB) 180° ±30° total power | >21 | >24 | >25 | >25 | >25 |
| Cross polar discrimination (XPD) 0° (dB) | >13 | >13 | >13 | >13 | >13 |
| Cross polar discrimination (XPD) ±60° (dB) | - | - | - | - | - |
| Far field coupling | - | - | - | - | - |
| IM3, 2xTx&43dBm (dBc) | <-150 | | <-150 | | |
| IM7, 2xTx&43dBm (dBc) | - | | <-160 | | |
| Power handling, average per input (W) | 200 | | 200 | | |
| Power handling, average total (W) | 400 | | 400 | | |

MECHANICAL SPECIFICATIONS*

| | |
|--|------------------------------------|
| Connector | 6x 7/16 DIN Female |
| Connector position | Bottom |
| Dimensions, HxWxD, mm(ft) | 2705x280x155mm(106"x11"x6") |
| Mounting | Pre-mounted heavy duty brackets |
| Weight, with brackets, kg (lbs) | 28.0(61.6) |
| Weight, without brackets, kg (lbs) | 22.5(49.5) |
| Wind load, frontal/lateral/rear side 42 m/s Cd=1.6 (N) | 883 / 188 / 1062 |
| Maximum operational wind speed, m/s (mph) | 42(93) |
| Survival wind speed, m/s (mph) | 55(123) |
| Lightning protection | DC Grounded |
| Operating Temperature | -40°C to +60°C |
| Radome Material | ASA |
| Radome colour | Light Gray |
| Packing size, HxWxD, mm (ft) | 2845x486x290(112"x19"x11") |
| Shipping weight, kg (lbs) | 34.4(75.7) |
| RET | 8210.40, 8210.10, 8230.40, 8230.10 |
| Brackets | 7256.00, 7454.00A |



*All specifications subject to change without notice. Please contact your Powerwave representative for complete performance data.

ANTENNA PATTERNS*

For detailed patterns visit <http://www.powerwave.com/rpa/>.