

P65-18-XDHH-M**iRET Tri Broadband Cross Polarized
790-960/2x1710-2170MHz, 2.6m**

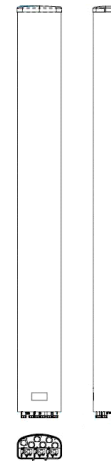
POLARIZATION: XXX-Pol
 FREQUENCY (MHz): 790-960, 2x1710-2170
 HORIZONTAL BEAM WIDTH (°): 65
 GAIN (dBi dBd): 17.4/15.3, 17.2/15.1, 17.5/15.4
 TILT: 0-10°/0-10°/0-10°
 LENGTH: 2.6m(8'6")

ELECTRICAL SPECIFICATIONS*

	790-960		2x1710-2170		
	790-894	880-960	1710-1880	1850-1990	1920-2170
Frequency range (MHz)					
Frequency band (MHz)	790-894	880-960	1710-1880	1850-1990	1920-2170
Gain (dBi/dBd)	17.0/14.9	17.4/15.3	17.2/15.1	17.2/15.1	17.5/15.4
Polarization	Dual linear ±45°		Dual linear ±45°		
Nominal Impedance (Ω)	50		50		
VSWR	<1.5:1		<1.5:1		
Horizontal beam width, -3 dB (°)	73	67	64	63	62
Vertical beam width, -3 dB (°)	7.7	7.2	7.0	6.5	6.2
Electrical down tilt (°)	0-10		0-10		
Side lobe suppression, vertical 1st upper (dB)	>15	>15	>15	>15	>15
Isolation between inputs (dB)	30	30	30	30	30
Inter band Isolation (dB)	38		38		
Tracking, horizontal plane ±60° (dB)	<2.0	<2.0	<2.0	<2.0	<2.0
First null fill (dB)	>-24 typical >-17	>-24 typical >-17	>-24 typical >-17	>-24 typical >-17	>-24 typical >-17
Vertical beam squint (°)	0.5	0.5	0.5	0.5	0.5
Front to back ratio (dB) 180° ±30° copolar	>28	>28	>28	>28	>30
Front to back ratio (dB) 180° ±30° total power	>25	>25	>25	>25	>27
Cross polar discrimination (XPD) 0° (dB)	13	13	16	15	17
Cross polar discrimination (XPD) ±60° (dB)	>7	>7	>6	>7	>7
Far field coupling	<0.24	<0.24	<0.47	<0.52	<0.52
IM3, 2xTx&43dBm (dBc)	<-153		<-153		
IM7, 2xTx&43dBm (dBc)			<-160		
Power handling, average per input (W)	300		250		
Power handling, average total (W)	600		500		

MECHANICAL SPECIFICATIONS*

Connector	6x 7/16 DIN Female
Connector position	Bottom
Dimensions, HxWxD, mm(ft)	2658x280x155mm(8'8"x11"x6")
Mounting	Pre-mounted heavy duty brackets
Weight, with brackets, kg (lbs)	26.2(57.7)
Weight, without brackets, kg (lbs)	20.7(45.6)
Wind load, frontal/lateral/rear side 42 m/s Cd=1.6 (N)	883 / 136 / 1062
Maximum operational wind speed, m/s (mph)	42(93)
Survival wind speed, m/s (mph)	55(123)
Lightning protection	DC Grounded
Operating Temperature	-40°C to +60°C
Radome Material	ASA
Radome colour	Light Gray
Packing size, HxWxD, mm (ft)	2800x355x255(9'2"x1'2"x10")
Shipping weight, kg (lbs)	31.5(69.4)
RET	No iRET Motor - use 3x8510.40 for upgrade(AISGv2.0)
Brackets	7256.00, 7454.00A



*All specifications subject to change without notice. Please contact your Powerwave representative for complete performance data.

ANTENNA PATTERNS*

For detailed patterns visit <http://www.powerwave.com/rpa/>.