

P65-18-XDB-R**Dual Broadband Cross Polarized 790-960MHz & 1710-2690MHz - iRET**

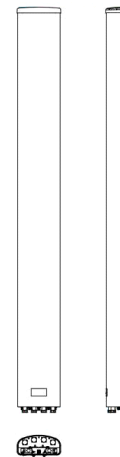
POLARIZATION: XX-Pol
 FREQUENCY (MHz): 790-960/1710-2690
 HORIZONTAL BEAM WIDTH (°): 65° / 65°
 GAIN (dBi dBd): 17.6/15.5, 18.1/16.0
 TILT: 0-10°/0-10°
 LENGTH: 2.6m(8'6")

PRELIMINARY**ELECTRICAL SPECIFICATIONS***

	790-960		1710-2690		
	790-896	870-960	1710-1880	1900-2170	2500-2690
Frequency range (MHz)					
Frequency band (MHz)	790-896	870-960	1710-1880	1900-2170	2500-2690
Gain (dBi/dBd)	17.0/14.9	17.6/15.5	17.4/15.3	17.9/15.8	18.1/16.0
Polarization	Dual Linear ±45°		Dual Linear ±45°		
Nominal Impedance (Ω)	50		50		
VSWR	1.5:1		1.5:1		
Horizontal beam width, -3 dB (°)	73	67	68	64	62
Vertical beam width, -3 dB (°)	7.4	7.2	7.0	6.6	6.2
Electrical down tilt (°)	0 - 10		0 - 10		
Side lobe suppression, vertical 1st upper (dB)	>15	>15	>15	>15	>15
Isolation between inputs (dB)	>30	>30	>30	>30	>30
Inter band Isolation (dB)	>35		>35		
Tracking, horizontal plane ±60° (dB)	<1	<1	<1.5	<1.5	<1.5
First null fill (dB)	<-25	<-25	<-25	<-25	<-25
Vertical beam squint (°)	<1	<1	<1	<1	<1
Front to back ratio (dB) 180° ±30° copolar	>30	>30	>30	>30	>30
Front to back ratio (dB) 180° ±30° total power	>25	>25	>25	>25	>25
Cross polar discrimination (XPD) 0° (dB)	>13	>13	>13	>13	>13
Cross polar discrimination (XPD) ±60° (dB)	>10	>10	>10	>10	>10
Far field coupling					
IM3, 2xTx&43dBm (dBc)	<-153		<-153		
IM7, 2xTx&43dBm (dBc)			<-160		
Power handling, average per input (W)	300		250		
Power handling, average total (W)	600		500		

MECHANICAL SPECIFICATIONS*

Connector	4x 7/16 DIN Female
Connector position	Bottom
Dimensions, HxWxD, mm(ft)	2630x 330 x125mm(104 x 13 x 5")
Mounting	Pre-mounted Heavy Duty Brackets
Weight, with brackets, kg (lbs)	25.1(55)
Weight, without brackets, kg (lbs)	19.6(43)
Wind load, frontal/lateral/rear side 42 m/s Cd=1.6 (N)	1140 / 200 / 1240
Maximum operational wind speed, m/s (mph)	42(93)
Survival wind speed, m/s (mph)	70(156)
Lightning protection	DC Ground
Operating Temperature	-40°C to +60°C
Radome Material	PVC
Radome colour	Light Grey
Packing size, HxWxD, mm (ft)	2830 x 400 x 255mm (112" x 15.7" x 10")
Shipping weight, kg (lbs)	32.5 (71.6)
RET	2x8510.40 factory attached and configured to AISGv2.0
Brackets	7256.00,7454.00A



*All specifications subject to change without notice. Please contact your Powerwave representative for complete performance data.

ANTENNA PATTERNS*

For detailed patterns visit <http://www.powerwave.com/rpa/>.