

P65-18-XB-M**High Broadband Cross Polarized
1710-2690MHz - iRET**

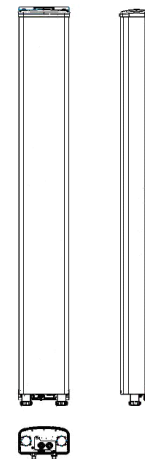
POLARIZATION: X-Pol
 FREQUENCY (MHz): 1710-2690
 HORIZONTAL BEAM WIDTH (°): 65
 GAIN (dBi dBd): 18.1/16.0
 TILT: 0-10°
 LENGTH: 1.4m(55")

PRELIMINARY**ELECTRICAL SPECIFICATIONS***

| | | | |
|---|----------------------------|-------------------|-------------------|
| Frequency range (MHz) | 1710-2690 | | |
| Frequency band (MHz) | 1710-1880 | 1900-2170 | 2300-2690 |
| Gain (dBi/dBd) | 17.6/15.5 | 18.0/15.9 | 18.1/16.0 |
| Polarization | Dual linear $\pm 45^\circ$ | | |
| Nominal Impedance (Ω) | 50 | | |
| VSWR | <1.5:1 | | |
| Horizontal beam width, -3 dB (°) | 68 | 64 | 62 |
| Vertical beam width, -3 dB (°) | 7.0 | 6.6 | 6.3 |
| Electrical down tilt (°) | 0-10 | | |
| Side lobe suppression, vertical 1st upper (dB) | >15 | >15 | >15 |
| Isolation between inputs (dB) | >30 | >30 | >30 |
| Tracking, horizontal plane $\pm 60^\circ$ (dB) | <1.0 | <1.0 | <1.0 |
| First null fill (dB) | >-24 typical >-17 | >-24 typical >-17 | >-24 typical >-17 |
| Vertical beam squint (°) | 0.5 | 0.5 | 0.5 |
| Front to back ratio (dB) $180^\circ \pm 30^\circ$ copolar | >30 | >30 | >30 |
| Front to back ratio (dB) $180^\circ \pm 30^\circ$ total power | >27 | >27 | >27 |
| Cross polar discrimination (XPD) 0° (dB) | >15 | >15 | >15 |
| Cross polar discrimination (XPD) $\pm 60^\circ$ (dB) | >10 | >10 | >10 |
| Far field coupling | | | |
| IM3, 2xTx&43dBm (dBc) | <-153 | <-153 | |
| IM7, 2xTx&43dBm (dBc) | | | <-160 |
| Power handling, average per input (W) | 250 | | |
| Power handling, average total (W) | 500 | | |

MECHANICAL SPECIFICATIONS*

| | |
|---|-----------------------------------|
| Connector | 2x7/16 DIN Female |
| Connector position | Bottom |
| Dimensions, HxWxD, mm(ft) | 1409x167x89.5 mm (4'3"x6"x3") |
| Mounting | Pre-mounted standard brackets |
| Weight, with brackets, kg (lbs) | 10.5(23.1) |
| Weight, without brackets, kg (lbs) | 6.8(15) |
| Wind load, frontal/lateral/rear side 42 m/s Cd=1.6 (N) | 300 |
| Maximum operational wind speed, m/s (mph) | 42 (93) |
| Survival wind speed, m/s (mph) | 55 (123) |
| Lightning protection | DC grounded |
| Operating Temperature | -40°C to +60°C |
| Radome Material | PVC |
| Radome colour | Light Gray |
| Packing size, HxWxD, mm (ft) | 1580x200x200mm (4'10"x8"x8") |
| Shipping weight, kg (lbs) | 14.2 (31.3) |
| RET | No iRET module attached [8510.10] |
| Brackets | 7456.00A |



*All specifications subject to change without notice. Please contact your Powerwave representative for complete performance data.

ANTENNA PATTERNS*

For detailed patterns visit <http://www.powerwave.com/rpa/>.