

P65-17-XLH-MM**Dual Broadband Antennas**

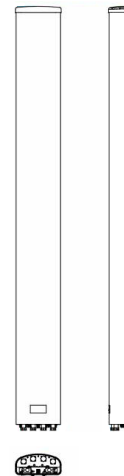
POLARIZATION: Dual linear $\pm 45^\circ$
 FREQUENCY (MHz): 698-894, 1710-2170
 HORIZONTAL BEAM WIDTH ($^\circ$): 65, 65
 GAIN (dBi/dBd): 17.2/15.1 17.5/15.4
 TILT: 0-6, 0-10
 LENGTH: 96"

ELECTRICAL SPECIFICATIONS*

Frequency range (MHz)	698-894		1710-2170		
	698-806	806-894	1710-1880	1850-1990	1900-2170
Frequency band (MHz)	698-806	806-894	1710-1880	1850-1990	1900-2170
Gain (dBi/dBd)	16.4/14.3	17.2/15.1	16.9/14.8	17.2/15.1	17.5/15.4
Polarization	Dual Linear +/- 45		Dual Linear +/- 45		
Nominal Impedance (Ω)	50		50		
VSWR	< 1.5:1		< 1.5:1		
Horizontal beam width, -3 dB ($^\circ$)	70	63	60	63	60
Vertical beam width, -3 dB ($^\circ$)	8.4		6.5		
Electrical down tilt ($^\circ$)	0 to 6		0 to 10		
Side lobe suppression, vertical 1st upper (dB)	> 16		> 16		
Isolation between inputs (dB)	> 30		> 30		
Inter band Isolation (dB)	> 40		> 40		
Tracking, horizontal plane $\pm 60^\circ$ (dB)	< 2		< 2		
Vertical beam squint ($^\circ$)	< 0.5		< 0.5		
Front to back ratio (dB) $180^\circ \pm 30^\circ$ copolar	25		> 30		
Front to back ratio (dB) $180^\circ \pm 30^\circ$ total power	22		> 25		
Cross polar discrimination (XPD) 0° (dB)	> 15		> 15		
Cross polar discrimination (XPD) $\pm 60^\circ$ (dB)	10		10		
IM3, 2xTx@43dBm (dBc)	-153		-153		
Power handling, average per input (W)	500		300		
Power handling, average total (W)	1000		600		

MECHANICAL SPECIFICATIONS*

Connector	4 X 7/16 DIN Female
Connector position	Bottom
Dimensions, HxWxD, in (mm)	96" x 12" x 6" (2438 x 305 x 152)
Mounting	Pre-mounted Tilt Brackets
Weight, with brackets, lbs (kg)	70 (32)
Weight, without brackets, lbs (kg)	59 (27)
Wind load, frontal/lateral/rear side 42 m/s Cd=1.0 (N)	1840
Maximum operational wind speed, mph (m/s)	100 (45)
Survival wind speed, mph (m/s)	150 (67)
Lightning protection	DC Ground
Operating Temperature	-40 to +60C
Radome material	PVC
Packet size, HxWxD, in (mm)	107" x 16" x 10" (2725 x 400 x 255)
Radome colour	Light Grey
Shipping weight, lbs (kg)	81 (37)
RET	iRET AISGv1.1, MET and AISGv2.0 Available
Brackets	7256.00, 7454.00, 2210.00



*All specifications subject to change without notice. Please contact your Powerwave representative for complete performance data.

ANTENNA PATTERNS*

For detailed patterns visit <http://www.powerwave.com/rpa/>.