

P65-17-XDH-M**iRET Dual Broadband Cross Polarized
790-960MHz / 1710-2170MHz, 2.0m**

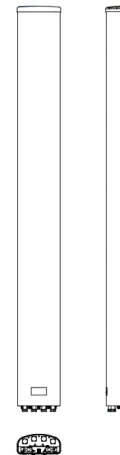
POLARIZATION: XX-Pol
 FREQUENCY (MHz): 790-960/1710-2170
 HORIZONTAL BEAM WIDTH (°): 65/65
 GAIN (dBi dBd): 16.0/13.9, 17.5/15.4
 TILT: 0-12°/0-10°
 LENGTH: 2.0m (6'6")

ELECTRICAL SPECIFICATIONS*

	790-960		1710-2170		
	790-896	870-960	1710-1880	1850-1990	1900-2170
Frequency range (MHz)					
Frequency band (MHz)	790-896	870-960	1710-1880	1850-1990	1900-2170
Gain (dBi/dBd)	15.5/13.4	16.0/13.9	17.0/14.9	17.2/15.1	17.5/15.4
Polarization	Dual Linear ±45°		Dual Linear ±45°		
Nominal Impedance (Ω)	50		50		
VSWR	1.5:1		1.5:1		
Horizontal beam width, -3 dB (°)	73	67	63	62	60
Vertical beam width, -3 dB (°)	9.5	8.6	6.7	6.6	6.2
Electrical down tilt (°)	0 - 12		0 - 10		
Side lobe suppression, vertical 1st upper (dB)	>18,16,16,16,18@ 2,4,6,8,10	>18,16,16,16,18@ 2,4,6,8,10	>16,16,15,15@ 2,4,6,8	>16,16,15,15@ 2,4,6,8	>16,16,15,15@ 2,4,6,8
Isolation between inputs (dB)	>30		>30		
Inter band Isolation (dB)	>34		>34		
Tracking, horizontal plane ±60° (dB)	<1.5	<1.5	<4.0	<4.0	<4.0
First null fill (dB)	<-25	<-25	<-25	<-25	<-25
Vertical beam squint (°)	<0.8	<0.8	<0.5	<0.5	<0.5
Front to back ratio (dB) 180° ±30° copolar	>27	>27	>28	>27	>27
Front to back ratio (dB) 180° ±30° total power	>24	>24	>25	>25	>25
Cross polar discrimination (XPD) 0° (dB)	>13	>13	>16	>16	>16
Cross polar discrimination (XPD) ±60° (dB)	>7	>7	>6	>6	>6
Far field coupling	<0.27	<0.47	<0.52	<0.66	<0.66
IM3, 2xTx&43dBm (dBc)	<-153		<-153		
IM7, 2xTx&43dBm (dBc)	-		<-160		
Power handling, average per input (W)	300		250		
Power handling, average total (W)	600		500		

MECHANICAL SPECIFICATIONS*

Connector	4x 7/16 DIN Female long neck
Connector position	Bottom
Dimensions, HxWxD, mm(ft)	2033x280x125mm (80 x11 x 5")
Mounting	Heavy Duty Brackets
Weight, with brackets, kg (lbs)	21.4 (47.3)
Weight, without brackets, kg (lbs)	15.9 (35.2)
Wind load, frontal/lateral/rear side 42 m/s Cd=1.6 (N)	653 / 103 / 785
Maximum operational wind speed, m/s (mph)	42 (93)
Survival wind speed, m/s (mph)	55 (123)
Lightning protection	DC Ground
Operating Temperature	-40°C to +60°C
Radome Material	GRP
Radome colour	Light Grey
Packing size, HxWxD, mm (ft)	2175x355x255 (86 x14 x 10")
Shipping weight, kg (lbs)	26 (57.5)
RET	No iRET Motor - use 2x8510.40 for upgrade(AISGv2.0)
Brackets	7256.00,7454.00A



*All specifications subject to change without notice. Please contact your Powerwave representative for complete performance data.

ANTENNA PATTERNS*

For detailed patterns visit <http://www.powerwave.com/rpa/>.