

P65-17-XDBB-M

Triple Broadband X-Pol 790-960MHz &
2x1710-2690MHz

POLARIZATION: XXX-Pol
 FREQUENCY (MHz): 790-960, 2x1710-2690
 HORIZONTAL BEAM WIDTH (°): 65
 GAIN (dBi dBd): 16.2/14.1, 16.5/14.4, 16.5/14.4
 TILT: 0-12°/0-12°/0-12°
 LENGTH: 2.0m(6'6")

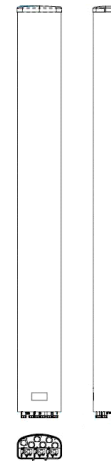
PRELIMINARY

ELECTRICAL SPECIFICATIONS*

	790-960		2x1710-2690		
	790-894	870-960	1710-1880	1900-2170	2500-2690
Frequency range (MHz)					
Frequency band (MHz)	790-894	870-960	1710-1880	1900-2170	2500-2690
Gain (dBi/dBd)	15.8/13.7	16.2/14.1	16.0/13.9	16.1/14.0	16.5/14.4
Polarization	Dual linear ±45°		Dual linear ±45°		
Nominal Impedance (Ω)	50		50		
VSWR	<1.5:1		<1.5:1		
Horizontal beam width, -3 dB (°)	73	67	68	64	62
Vertical beam width, -3 dB (°)	9.6	8.6	10.0	9.4	8.7
Electrical down tilt (°)	0 - 12		0 - 12		
Side lobe suppression, vertical 1st upper (dB)	>15	>15	>15	>15	>15
Isolation between inputs (dB)	>30	>30	>30	>30	>30
Inter band Isolation (dB)	>34		>34		
Tracking, horizontal plane ±60° (dB)	<1.0	<1	<1.5	<2	<4
First null fill (dB)	>-24 typical >-17	>-24 typical >-17	>-24 typical >-17	>-24 typical >-17	>-24 typical >-17
Vertical beam squint (°)	0.5	0.5	0.5	0.5	0.5
Front to back ratio (dB) 180° ±30° copolar	>28	>30	>27	>28	>30
Front to back ratio (dB) 180° ±30° total power	>26	>26	>25	>25	>25
Cross polar discrimination (XPD) 0° (dB)	>13	>13	>13	>13	>13
Cross polar discrimination (XPD) ±60° (dB)	>10	>10	>10	>10	>10
Far field coupling	<0.27	<0.47	<0.52	<0.66	<0.66
IM3, 2xTx&43dBm (dBc)	<-153		<-153		
IM7, 2xTx&43dBm (dBc)			<-160		
Power handling, average per input (W)	300		250		
Power handling, average total (W)	600		500		

MECHANICAL SPECIFICATIONS*

Connector	6x 7/16 DIN Female
Connector position	Bottom
Dimensions, HxWxD, mm(ft)	2033x330x125mm (6'8"x13"x4")
Mounting	Pre-mounted standard brackets
Weight, with brackets, kg (lbs)	21.9 (48.2)
Weight, without brackets, kg (lbs)	16.4 (36.1)
Wind load, frontal/lateral/rear side 42 m/s Cd=1.6 (N)	880 / 154 / 955
Maximum operational wind speed, m/s (mph)	42 (93)
Survival wind speed, m/s (mph)	55 (123)
Lightning protection	DC grounded
Operating Temperature	-40°C to +60°C
Radome Material	PVC
Radome colour	Light Grey
Packing size, HxWxD, mm (ft)	2175x400x255 (7'2"x15.7"x10")
Shipping weight, kg (lbs)	26.5 (58.4)
RET	No iRET module attached [8510.40]
Brackets	7256.00



*All specifications subject to change without notice. Please contact your Powerwave representative for complete performance data.

ANTENNA PATTERNS*

For detailed patterns visit <http://www.powerwave.com/rpa/>.