

P65-16-XLH-RR

Dual Broadband Antennas

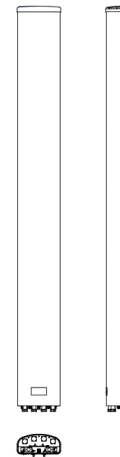
POLARIZATION: Dual linear $\pm 45^\circ$
 FREQUENCY (MHz): 698-894, 1710-2170
 HORIZONTAL BEAM WIDTH ($^\circ$): 65, 65
 GAIN (dBi dBd): 15.5/13.4 17.2/15.1
 TILT: 1-12, 0-8
 LENGTH: 72"

ELECTRICAL SPECIFICATIONS*

	698-894		1710-2170		
	698-806	806-894	1710-1880	1850-1990	1900-2170
Frequency range (MHz)					
Frequency band (MHz)	698-806	806-894	1710-1880	1850-1990	1900-2170
Gain (dBi/dBd)	14.8/12.7	15.5/13.4	16.9/14.8	17.2/15.1	17.2/15.1
Polarization	Dual Linear +/- 45		Dual Linear +/- 45		
Nominal Impedance (Ω)	50		50		
VSWR	< 1.5:1		< 1.5:1		
Horizontal beam width, -3 dB ($^\circ$)	66	65	60	63	63
Vertical beam width, -3 dB ($^\circ$)	14.7	12.5	6.8	6.4	5.7
Electrical down tilt ($^\circ$)	1 to 12		0 to 8		
Side lobe suppression, vertical 1st upper (dB)	> 16	>16	> 16	> 16	> 16
Isolation between inputs (dB)	> 30	> 30	> 30	> 30	
Inter band Isolation (dB)	> 40				
Tracking, horizontal plane $\pm 60^\circ$ (dB)	< 2	< 2	< 2	< 2	< 2
First null fill (dB)	>-20	>-20	>-20	>-20	>-20
Vertical beam squint ($^\circ$)	< 0.8	< 0.8	< 0.5	< 0.5	< 0.5
Front to back ratio (dB) $180^\circ \pm 30^\circ$ copolar	>24	>24	> 30	> 30	> 28
Front to back ratio (dB) $180^\circ \pm 30^\circ$ total power	> 22	> 22	> 25	> 25	> 24
Cross polar discrimination (XPD) 0° (dB)	> 15	> 15	> 15	> 15	> 15
Cross polar discrimination (XPD) $\pm 60^\circ$ (dB)	> 10	> 10	> 10	> 10	> 10
Far field coupling					
IM3, 2xTx&43dBm (dBc)	<-153		<-153		
IM7, 2xTx&43dBm (dBc)					
Power handling, average per input (W)	500		250		
Power handling, average total (W)	1000		500		

MECHANICAL SPECIFICATIONS*

Connector	4 x 7/16 DIN Female, IP67, 4 x AISG [2 x i-RET 8510.40]
Connector position	Bottom
Dimensions, HxWxD, mm(ft)	1820x312x148 (72"x12"x6")
Mounting	Pole Mounting Bracket
Weight, with brackets, kg (lbs)	22.7 (50)
Weight, without brackets, kg (lbs)	19.1 (42)
Wind load, frontal/lateral/rear side 42 m/s Cd=1.6 (N)	708 / 108 / 896
Maximum operational wind speed, m/s (mph)	45 (100)
Survival wind speed, m/s (mph)	67 (150)
Lightning protection	DC Ground
Operating Temperature	-40°C to +60°C
Radome Material	PVC, IP55
Radome colour	Light Grey
Packing size, HxWxD, mm (ft)	1970 x 427 x 275 (78" x 17" x 11")
Shipping weight, kg (lbs)	26.3 (58)
RET	iRET AISGv1.1, MET and AISGv2.0
Brackets	7253.00 Available as Option



*All specifications subject to change without notice. Please contact your Powerwave representative for complete performance data.

ANTENNA PATTERNS*

For detailed patterns visit <http://www.powerwave.com/rpa/>.