

## P65-16-XLH-MM

## Dual Broadband Antennas

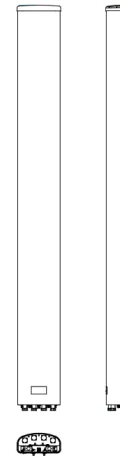
POLARIZATION: Dual linear  $\pm 45^\circ$   
 FREQUENCY (MHz): 698-894, 1710-2170  
 HORIZONTAL BEAM WIDTH ( $^\circ$ ): 65, 65  
 GAIN (dBi dBd): 15.5/13.4 17.5/15.4  
 TILT: 1-12, 0-8  
 LENGTH: 72"

## ELECTRICAL SPECIFICATIONS\*

	698-894		1710-2170		
	698-806	806-894	1710-1880	1850-1990	1900-2170
Frequency range (MHz)					
Frequency band (MHz)	698-806	806-894	1710-1880	1850-1990	1900-2170
Gain (dBi/dBd)	14.8/12.7	15.5/13.4	16.9/14.8	17.2/15.1	17.5/15.4
Polarization	Dual Linear +/- 45		Dual Linear +/- 45		
Nominal Impedance ( $\Omega$ )	50		50		
VSWR	< 1.5:1		< 1.5:1		
Horizontal beam width, -3 dB ( $^\circ$ )	66	65	60	63	63
Vertical beam width, -3 dB ( $^\circ$ )	14.7	12.5	6.8	6.4	5.7
Electrical down tilt ( $^\circ$ )	1 to 12		0 to 8		
Side lobe suppression, vertical 1st upper (dB)	>16	>16	>16		
	>16	>16			
Isolation between inputs (dB)	> 30	> 30	> 30	> 30	
Inter band Isolation (dB)	> 40		> 40		
Tracking, horizontal plane $\pm 60^\circ$ (dB)	< 2		< 2	< 2	< 2
First null fill (dB)			>-20	>-20	>-20
Vertical beam squint ( $^\circ$ )	< 0.8	< 0.8	< 0.5	< 0.5	< 0.5
Front to back ratio (dB) $180^\circ \pm 30^\circ$ copolar	>24	>24	>30	>30	>28
Front to back ratio (dB) $180^\circ \pm 30^\circ$ total power					
Cross polar discrimination (XPD) $0^\circ$ (dB)	> 15	> 15	> 15	> 15	> 15
Cross polar discrimination (XPD) $\pm 60^\circ$ (dB)	> 10	> 10	> 10	> 10	> 10
Far field coupling					
IM3, 2xTx&43dBm (dBc)	<-153		<-153		
IM7, 2xTx&43dBm (dBc)					
Power handling, average per input (W)	500		250		
Power handling, average total (W)	1000		500		

## MECHANICAL SPECIFICATIONS\*

Connector	4 X 7/16 DIN Female, IP67
Connector position	Bottom
Dimensions, HxWxD, mm(ft)	1829x312.5x147.5 (72"x12"x6")
Mounting	Pole Mounting Bracket
Weight, with brackets, kg (lbs)	29 (64)
Weight, without brackets, kg (lbs)	24 (53)
Wind load, frontal/lateral/rear side 42 m/s Cd=1.6 (N)	708 / 108 / 896
Maximum operational wind speed, m/s (mph)	45 (100)
Survival wind speed, m/s (mph)	67 (150)
Lightning protection	DC Ground
Operating Temperature	-40C to +60C
Radome Material	PVC, IP55
Radome colour	Light Grey
Packing size, HxWxD, mm (ft)	2225 x 400 x 225 (87" x 16" x 10")
Shipping weight, kg (lbs)	34 (75)
RET	iRET AISGv1.1, MET and AISGv2.0
Brackets	7253.00 Available as option



\*All specifications subject to change without notice. Please contact your Powerwave representative for complete performance data.

## ANTENNA PATTERNS\*

For detailed patterns visit <http://www.powerwave.com/rpa/>.