

P65-15-XLH-RR

Dual Broadband Antennas

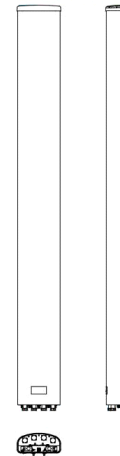
POLARIZATION: Dual linear $\pm 45^\circ$
 FREQUENCY (MHz): 698-894, 1710-2170
 HORIZONTAL BEAM WIDTH ($^\circ$): 65, 65
 GAIN (dBi dBd): 14.7/12.6, 17.0/14.9
 TILT: 0-13, 0-9
 LENGTH: 51"

ELECTRICAL SPECIFICATIONS*

	698-894		1710-2170		
	698-806	806-894	1710-1880	1850-1990	1900-2170
Frequency range (MHz)					
Frequency band (MHz)	698-806	806-894	1710-1880	1850-1990	1900-2170
Gain (dBi/dBd)	14/11.9	14.7/12.6	16.4/14.3	16.7/14.6	17.0/14.9
Polarization	Dual Linear +/- 45		Dual Linear +/- 45		
Nominal Impedance (Ω)	50		50		
VSWR	< 1.5:1		< 1.5:1		
Horizontal beam width, -3 dB ($^\circ$)	73	63	65	61	60
Vertical beam width, -3 dB ($^\circ$)	17		7.5		
Electrical down tilt ($^\circ$)	0-13		0-9		
Side lobe suppression, vertical 1st upper (dB)	> 14		>20		
Isolation between inputs (dB)	>30		> 30		
Inter band Isolation (dB)	> 40		> 40		
Tracking, horizontal plane $\pm 60^\circ$ (dB)	< 2		< 2		
Vertical beam squint ($^\circ$)	<1.25		< 0.5		
Front to back ratio (dB) $180^\circ \pm 30^\circ$ copolar	> 25		> 28		
Front to back ratio (dB) $180^\circ \pm 30^\circ$ total power	> 25		> 25		
Cross polar discrimination (XPD) 0° (dB)	> 15		> 15		
Cross polar discrimination (XPD) $\pm 60^\circ$ (dB)	> 10		> 10		
IM3, 2xTx&43dBm (dBc)	<-153		<-153		
Power handling, average per input (W)	500		300		
Power handling, average total (W)	1000		600		

MECHANICAL SPECIFICATIONS*

Connector	4 x 7/16 DIN Female, IP67, 4 x AISG [2 x i-RET 8510.40]
Connector position	Bottom
Dimensions, HxWxD, mm(ft)	1280 x 312 x 148 (51"x12"x6")
Mounting	Pole Mounting Bracket
Weight, with brackets, kg (lbs)	18.2 (40)
Weight, without brackets, kg (lbs)	14.5 (32)
Wind load, frontal/lateral/rear side 42 m/s Cd=1.6 (N)	404 / 75 / 511
Maximum operational wind speed, m/s (mph)	45 (100)
Survival wind speed, m/s (mph)	67 (150)
Lightning protection	DC Ground
Operating Temperature	-40°C to +60°C
Radome Material	PVC, IP55
Radome colour	Light Grey
Packing size, HxWxD, mm (ft)	1427 x 427 x 275 (56" x 17" x 10.8")
Shipping weight, kg (lbs)	21.8 (48)
RET	iRET AISGv1.1, MET and AISGv2.0
Brackets	7253.00 Available as option



*All specifications subject to change without notice. Please contact your Powerwave representative for complete performance data.

ANTENNA PATTERNS*

For detailed patterns visit <http://www.powerwave.com/rpa/>.