

P65-15-XLH-MM

Dual Broadband Antennas

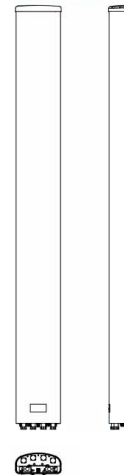
POLARIZATION: Dual linear $\pm 45^\circ$
 FREQUENCY (MHz): 698-894, 1710-2170
 HORIZONTAL BEAM WIDTH ($^\circ$): 65, 65
 GAIN (dBi/dBd): 14.7/12.6, 17.0/14.9
 TILT: 0-13, 0-9
 LENGTH: 51"

ELECTRICAL SPECIFICATIONS*

| Frequency range (MHz) | 698-894 | | 1710-2170 | | |
|---|--------------------|-----------|--------------------|-----------|-----------|
| | 698-806 | 806-894 | 1710-1880 | 1850-1990 | 1900-2170 |
| Frequency band (MHz) | 698-806 | 806-894 | 1710-1880 | 1850-1990 | 1900-2170 |
| Gain (dBi/dBd) | 14/11.9 | 14.7/12.6 | 16.4/14.3 | 16.7/14.6 | 17.0/14.9 |
| Polarization | Dual Linear +/- 45 | | Dual Linear +/- 45 | | |
| Nominal Impedance (Ω) | 50 | | 50 | | |
| VSWR | < 1.5:1 | | < 1.5:1 | | |
| Horizontal beam width, -3 dB ($^\circ$) | 73 | 63 | 65 | 61 | 60 |
| Vertical beam width, -3 dB ($^\circ$) | 17 | | 7.5 | | |
| Electrical down tilt ($^\circ$) | 0-13 | | 0-9 | | |
| Side lobe suppression, vertical 1st upper (dB) | > 14 | | >20 | | |
| Isolation between inputs (dB) | >30 | | > 30 | | |
| Inter band Isolation (dB) | > 40 | | > 40 | | |
| Tracking, horizontal plane $\pm 60^\circ$ (dB) | < 2 | | < 2 | | |
| Vertical beam squint ($^\circ$) | <1.25 | | < 0.5 | | |
| Front to back ratio (dB) $180^\circ \pm 30^\circ$ copolar | > 25 | | > 28 | | |
| Front to back ratio (dB) $180^\circ \pm 30^\circ$ total power | > 25 | | > 25 | | |
| Cross polar discrimination (XPD) 0° (dB) | > 15 | | > 15 | | |
| Cross polar discrimination (XPD) $\pm 60^\circ$ (dB) | > 10 | | > 10 | | |
| IM3, 2xTx@43dBm (dBc) | -153 | | -153 | | |
| Power handling, average per input (W) | 500 | | 300 | | |
| Power handling, average total (W) | 1000 | | 600 | | |

MECHANICAL SPECIFICATIONS*

| | |
|--|------------------------------------|
| Connector | 4 X 7/16 DIN Female, IP67 |
| Connector position | Bottom |
| Dimensions, HxWxD, in (mm) | 51" x 12" x 6" (1295 x 305 x 152) |
| Mounting | Pre-mounted Tilt Brackets |
| Weight, with brackets, lbs (kg) | 41 (19) |
| Weight, without brackets, lbs (kg) | 30 (14) |
| Wind load, frontal/lateral/rear side 42 m/s Cd=1.0 (N) | 920 |
| Maximum operational wind speed, mph (m/s) | 100 (45) |
| Survival wind speed, mph (m/s) | 150 (67) |
| Lightning protection | DC Ground |
| Operating Temperature | -40C to +60C |
| Radome material | PVC, IP55 |
| Packet size, HxWxD, in (mm) | 60" x 16" x 10" (1524 x 400 x 255) |
| Radome colour | Light Grey |
| Shipping weight, lbs (kg) | 52 (24) |
| RET | iRET AISGv1.1, MET and AISGv2.0 |
| Brackets | 7256.00, 7454.00, 2210.00 |



*All specifications subject to change without notice. Please contact your Powerwave representative for complete performance data.

ANTENNA PATTERNS*

For detailed patterns visit <http://www.powerwave.com/rpa/>.