

P65-15-XL-2

Very Low Broadband Antennas

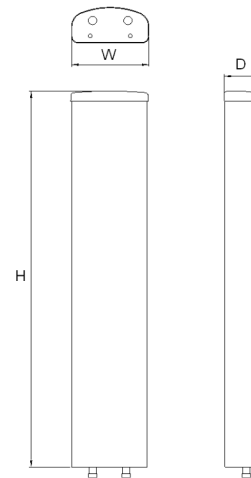
POLARIZATION: Dual linear $\pm 45^\circ$
 FREQUENCY (MHz): 698-894
 HORIZONTAL BEAM WIDTH ($^\circ$): 65
 GAIN (dBi/dBd): 14.5/12.4
 TILT: 2°
 LENGTH: 1.2m (48")

ELECTRICAL SPECIFICATIONS*

Frequency range (MHz)	698-894	
Frequency band (MHz)	698-806	806-894
Gain (dBi/dBd)	14.0/11.9	14.5/12.4
Polarization	Dual Linear +/- 45	
Nominal Impedance (Ω)	50	
VSWR	< 1.33:1	
Horizontal beam width, -3 dB ($^\circ$)	68	65
Vertical beam width, -3 dB ($^\circ$)	16.5	15.5
Electrical down tilt ($^\circ$)	2	
Side lobe suppression, vertical 1st upper (dB)	> 15	> 15
Tracking, horizontal plane $\pm 60^\circ$ (dB)	< 2	< 2
Isolation between inputs (dB)	> 30	> 30
First null fill (dB)	-	-
Vertical beam squint ($^\circ$)	< 0.5	< 0.5
Front to back ratio (dB) $180^\circ \pm 30^\circ$ copolar	> 30	> 30
Front to back ratio (dB) $180^\circ \pm 30^\circ$ total power	> 25	> 25
Cross polar discrimination (XPD) 0° (dB)	> 15	> 15
Cross polar discrimination (XPD) $\pm 60^\circ$ (dB)	> 10	> 10
IM3, 2xTx@43dBm (dBc)	-153	
Power handling, average per input (W)	400	
Power handling, average total (W)	800	

MECHANICAL SPECIFICATIONS*

Connector	2 X 7/16 DIN Female
Connector position	Bottom
Dimensions, HxWxD, in (mm)	48"x12"x5" (1219x305x125)
Mounting	Pre-mounted Tilt Brackets
Weight, with brackets, lbs (kg)	33 (15)
Weight, without brackets, lbs (kg)	22 (10)
Wind load, frontal/lateral/rear side 42 m/s Cd=1.0 (N)	400
Maximum operational wind speed, mph (m/s)	100 (45)
Survival wind speed, mph (m/s)	125 (55)
Lightning protection	DC Ground
Operating Temperature	
Radome material	PVC
Packet size, HxWxD, in (mm)	58" x 16" x 10" (1475 x 400 x 255)
Radome colour	Light Grey
Shipping weight, lbs (kg)	44 (22)
RET	N/A
Brackets	7256.00, 7454.00, 2210.00



*All specifications subject to change without notice. Please contact your Powerwave representative for complete performance data.

ANTENNA PATTERNS*

For detailed patterns visit <http://www.powerwave.com/rpa/>.