

**P65-15-XDHH-M****iRET Tri Broadband Cross Polarized  
790-960/2x1710-2170MHz, 1.4m**

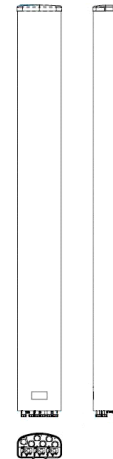
POLARIZATION: XXX-Pol  
 FREQUENCY (MHz): 790-960, 2x1710-2170  
 HORIZONTAL BEAM WIDTH (°): 65  
 GAIN (dBi dBd): 14.7/12.6, 14.6/12.5, 14.6/12.5  
 TILT: 0-16°/0-12°/0-12°  
 LENGTH: 1.4m(4'7")

**ELECTRICAL SPECIFICATIONS\***

	790-960		2x1710-2170		
	790-894	880-960	1710-1880	1850-1990	1920-2170
Frequency range (MHz)					
Frequency band (MHz)	790-894	880-960	1710-1880	1850-1990	1920-2170
Gain (dBi/dBd)	14.0/11.9	14.7/12.6	14.4/12.3	14.6/12.5	14.8/12.7
Polarization	Dual linear ±45°		Dual linear ±45°		
Nominal Impedance (Ω)	50		50		
VSWR	<1.5:1		<1.5:1		
Horizontal beam width, -3 dB (°)	73	67	65	63	60
Vertical beam width, -3 dB (°)	14.9	13.9	13.3	12.6	12
Electrical down tilt (°)	0 - 16		0 - 12		
Side lobe suppression, vertical 1st upper (dB)	>18,17,16,16@ 2,4,8,12	>17,16,15,13@ 2,4,8,12	>17,16,15,14@ 0,4,8,12	>17,16,15,14@ 0,4,8,12	>17,16,15,13@ 0,4,8,12
Isolation between inputs (dB)	>30	>30	>30	>30	>30
Inter band Isolation (dB)	>38		>38		
Tracking, horizontal plane ±60° (dB)	<1.5	<2	<2	<2	<2
First null fill (dB)	25	25	25	25	25
Vertical beam squint (°)	0.7	0.7	0.7	1	1
Front to back ratio (dB) 180° ±30° copolar	>27	>28	>28	>28	>28
Front to back ratio (dB) 180° ±30° total power	>25	>25	>25	>25	>25
Cross polar discrimination (XPD) 0° (dB)	15	14	16	18	18
Cross polar discrimination (XPD) ±60° (dB)	>9	>8	>6	>6	>6
Far field coupling	< 0.35	< 0.50	< 0.55	< 0.74	< 0.74
IM3, 2xTx&43dBm (dBc)	<-153		<-153		
IM7, 2xTx&43dBm (dBc)			<-160		
Power handling, average per input (W)	300		250		
Power handling, average total (W)	600		1000		

**MECHANICAL SPECIFICATIONS\***

Connector	6x 7/16 DIN Female
Connector position	Bottom
Dimensions, HxWxD, mm(ft)	1408x280x155mm (4'7"x11"x6")
Mounting	Pre-mounted heavy duty brackets
Weight, with brackets, kg (lbs)	17.5 (38.6)
Weight, without brackets, kg (lbs)	12 (26.4)
Wind load, frontal/lateral/rear side 42 m/s Cd=1.6 (N)	415
Maximum operational wind speed, m/s (mph)	42 (93)
Survival wind speed, m/s (mph)	55 (123)
Lightning protection	DC grounded
Operating Temperature	-40°C to +60°C
Radome Material	ASA
Radome colour	Light Grey
Packing size, HxWxD, mm (ft)	1550x355x200 (5'1"x1'2"x7")
Shipping weight, kg (lbs)	21.5 (47.4)
RET	No iRET Motor - use 3x8510.40 for upgrade(AISGv2.0)
Brackets	7256.00, 7454.00A



\*All specifications subject to change without notice. Please contact your Powerwave representative for complete performance data.

**ANTENNA PATTERNS\***

For detailed patterns visit <http://www.powerwave.com/rpa/>.