

P45-16-XLH-RR

Dual Broadband Antennas

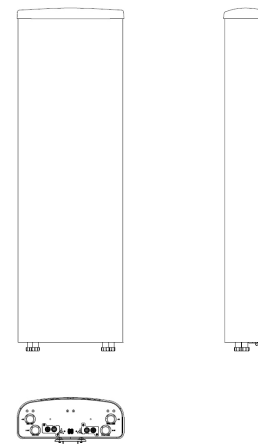
POLARIZATION: Dual linear $\pm 45^\circ$
 FREQUENCY (MHz): 698-894, 1710-2170
 HORIZONTAL BEAM WIDTH ($^\circ$): 45, 45
 GAIN (dBi dBd): 16.3/14.2, 18.7/16.6
 TILT: 0-14, 0-8
 LENGTH: 54"

ELECTRICAL SPECIFICATIONS*

	698-894		1710-2170		
	698-806	806-894	1710-1880	1850-1990	1900-2170
Frequency range (MHz)					
Frequency band (MHz)	698-806	806-894	1710-1880	1850-1990	1900-2170
Gain (dBi/dBd)	14.6/12.5	16.3/14.2	17.8/15.7	18.1/16	18.7/16.6
Polarization	Dual Linear +/- 45		Dual Linear +/- 45		
Nominal Impedance (Ω)	50		50		
VSWR	< 1.5:1		< 1.5:1		
Horizontal beam width, -3 dB ($^\circ$)	48	42	45	44	41
Vertical beam width, -3 dB ($^\circ$)	16.0		6.5		
Electrical down tilt ($^\circ$)	0-14		0-8		
Side lobe suppression, vertical 1st upper (dB)	>15		>17		
Isolation between inputs (dB)	30		30		
Inter band Isolation (dB)	> 30		> 30		
Tracking, horizontal plane $\pm 30^\circ$ (dB)	< 2		< 2		
Vertical beam squint ($^\circ$)	<1.25		< 0.5		
Front to back ratio (dB) $180^\circ \pm 30^\circ$ copolar	> 25		> 28		
Front to back ratio (dB) $180^\circ \pm 30^\circ$ total power	> 25		> 25		
Cross polar discrimination (XPD) 0° (dB)	> 15		> 15		
Cross polar discrimination (XPD) $\pm 30^\circ$ (dB)	> 12		> 10		
IM3, 2xTx&43dBm (dBc)	-153		-153		
Power handling, average per input (W)	500		250		
Power handling, average total (W)	1000		500		

MECHANICAL SPECIFICATIONS*

Connector	4 X 7/16 DIN Female, IP67
Connector position	Bottom
Dimensions, HxWxD, mm(ft)	1380 x 441 x 165.5 (54" x 17.4" x 6.5")
Mounting	Fixed Tilt Brackets Provided
Weight, with brackets, kg (lbs)	24.0 (53)
Weight, without brackets, kg (lbs)	20.4 (45)
Wind load, frontal/lateral/rear side 42 m/s Cd=1.6 (N)	650 / 102 / 760
Maximum operational wind speed, m/s (mph)	45 (100)
Survival wind speed, m/s (mph)	67 (150)
Lightning protection	DC Ground
Operating Temperature	-40C to +60C
Radome Material	PVC, IP55
Radome colour	Light Grey
Packing size, HxWxD, mm (ft)	1530 x 550 x 330 (62.2" x 23.2" x 13")
Shipping weight, kg (lbs)	30.1 (66.5)
RET	iRET AISGv1.1, MET and AISGv2.0
Brackets	



*All specifications subject to change without notice. Please contact your Powerwave representative for complete performance data.

ANTENNA PATTERNS*

For detailed patterns visit <http://www.powerwave.com/rpa/>.