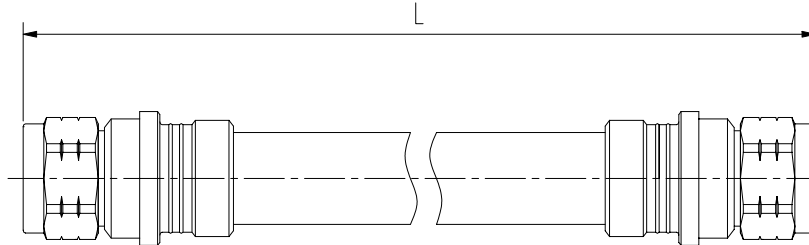


1/2" FLEXIBLE JUMPERS -N male connectors



1. ELECTRICAL CHARACTERISTICS

Impedance	: $50 \pm 1 \Omega$
Operating frequency range	: DC - 3 GHz
RMS power (40°C - 2 GHz)	: 0.81 kW
Velocity	: 87 %
Intermodulation product measured in swept frequency mode ,with 2 x 20 W carriersfor	
- IM3 at 900MHz	: ≤ -158 dBc
- IM3 at 1800MHz	: ≤ -158 dBc
- IM7 at 2100MHz	: ≤ -158 dBc

2. MECHANICAL CHARACTERISTICS

Inner and outer contact 100 % soldered to the connector

Coupling standard	: N male in compliance with IEC 169-16 standard
Material and finish of the body	: Brass alloy
Material and finish of the coupling nut	: Nickel-plated brass
Material and finish of inner conductor	: Silver-plated bronze
Coupling waterproofing	: Silicone rubber O-ring
Coupling torque	: 2.5 Nm .
Minimum bending radius	: 70 mm

3. ENVIRONMENTAL CHARACTERISTICS

Operating temperature range	: $-40^{\circ} \text{C} < \theta < +70^{\circ} \text{C}$
Waterproofing index	: IP 68 (1 m / 24 h)
RoHS compliance	: Yes

Connectors : ACOME N male connectors

Length (m)	ACOME Reference	Weight (g)	Frequency 0/1000 MHz		Frequency 1000/2200 MHz		Frequency 2200/3000 MHz	
			RL*(dB)	α (dB)	RL (dB)	α (dB)	RL(dB)	α (dB)
1	C0680X	355	-32	0.18	-30	0.26	-26	0.30
1.5	C0681X	470	-32	0.22	-30	0.32	-26	0.37
2	C0682X	580	-32	0.26	-30	0.38	-26	0.44
2.5	C0683X	690	-32	0.28	-30	0.43	-26	0.51
3	C0277X	810	-32	0.33	-30	0.49	-26	0.57
4	C0684X	1030	-32	0.39	-30	0.61	-26	0.71
5	C0685X	1250	-32	0.46	-30	0.71	-26	0.84

This technical specification is for reference only and is subject to change without notice

Edition :A4-12/07/2008