

8785.0ST.B100.02 i-RET ANTENNA TBB65 2.6m ALXT-824-960/1710-2170-65-17.3i/18i/18i-Ai-D

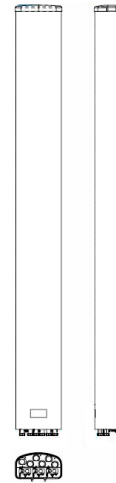
POLARIZATION: XXX-Pol
 FREQUENCY (MHz): 824-960, 2x1710-2170
 HORIZONTAL BEAM WIDTH (°): 65
 GAIN (dBi/dBd): 17.4/15.3, 17.2/15.1, 17.5/15.4
 TILT: 0-10°/0-10°/0-10°
 LENGTH: 2.6m(8'6")

ELECTRICAL SPECIFICATIONS*

	824-960		2x1710-2170		
	806-894	880-960	1710-1880	1850-1990	1920-2170
Frequency range (MHz)	824-960		2x1710-2170		
Frequency band (MHz)	806-894	880-960	1710-1880	1850-1990	1920-2170
Gain (dBi/dBd)	17.4/15.3	17.4/15.3	17.2/15.1	17.2/15.1	17.5/15.4
Polarization	Dual linear ±45°		Dual linear ±45°		
Nominal Impedance (Ω)	50		50		
VSWR	<1.5:1		<1.5:1		
Horizontal beam width, -3 dB (°)	65	65	65	65	62
Vertical beam width, -3 dB (°)	7	7	7	7	6
Electrical down tilt (°)	0 - 10		0 - 10		
Side lobe suppression, vertical 1st upper (dB)	>17	>17	>17	>17	>17
Isolation between inputs (dB)	30	30	30	30	30
Inter band Isolation (dB)	38		38		
Tracking, horizontal plane ±60° (dB)	<2.0	<2.0	<1.5	<1.5	<1.5
First null fill (dB)	>-24 typical >-17	>-24 typical >-17	>-24 typical >-17	>-24 typical >-17	>-24 typical >-17
Vertical beam squint (°)	0.5	0.5	0.5	0.5	0.5
Front to back ratio (dB)	>28	>28	>30	>30	>30
Front to back ratio, total power (dB)	>27	>27	>27	>27	>25
Cross polar discrimination (XPD) 0° (dB)	16	15	16	15	17
Cross polar discrimination (XPD) ±60° (dB)	>12	>9.5	>7.0	>7.5	>7.7
Far field coupling	<0.24	<0.44	<0.47	<0.52	<0.52
IM3, 2xTx@43dBm (dBc)	<-153		<-153		
IM7, 2xTx@43dBm (dBc)			<-160		
Power handling, average per input (W)	300		250		
Power handling, average total (W)	600		500		

MECHANICAL SPECIFICATIONS*

Connector	6x 7/16 DIN Female 2x AISG
Connector position	Bottom
Dimensions, HxWxD, mm (ft)	2658x280x155mm(8'8"x11"x6")
Mounting	Pre-mounted heavy duty brackets
Weight, with brackets, kg (lbs)	26.7(58.8)
Weight, without brackets, kg (lbs)	21.2(46.7)
Wind load, frontal/lateral/rear side 42 m/s Cd=1.6 (N)	880
Maximum operational wind speed, m/s (mph)	42(93)
Survival wind speed, m/s (mph)	55(123)
Lightning protection	DC Grounded
Operating Temperature	
Radome material	ASA
Package size, HxWxD, mm (ft)	2800x355x255(9'2"x1'2"x10")
Radome colour	Light Gray
Shipping weight, kg (lbs)	32(70.5)
RET	AISG1.1 (AISG2.0/Ericsson) on WHITE system
Brackets	7256.00, 2210.10, 7454.00A



*All specifications subject to change without notice. Please contact your Powerwave representative for complete performance data.

ANTENNA PATTERNS*

For detailed patterns visit <http://www.powerwave.com/rpa/>.