

# 8780.0ST.B400.04 i-RET ANTENNA TBB65 1.4m ALXT-824-960/1710-2170-65-14.7i/15i/15i-Ai-D

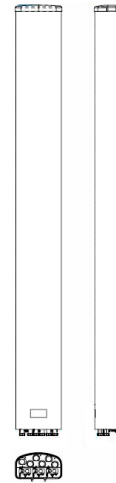
POLARIZATION: XXX-Pol  
 FREQUENCY (MHz): 824-960, 2x1710-2170  
 HORIZONTAL BEAM WIDTH (°): 65  
 GAIN (dBi/dBd): 14.7/12.6, 14.6/12.5, 14.6/12.5  
 TILT: 0-20°/0-12°/0-12°  
 LENGTH: 1.4m(4'7")

## ELECTRICAL SPECIFICATIONS\*

	824-960		2x1710-2170		
	806-894	880-960	1710-1880	1850-1990	1920-2170
Frequency range (MHz)	824-960		2x1710-2170		
Frequency band (MHz)	806-894	880-960	1710-1880	1850-1990	1920-2170
Gain (dBi/dBd)	14.1/12	14.7/12.6	14.4/12.3	14.6/12.5	14.8/12.7
Polarization	Dual linear ±45°		Dual linear ±45°		
Nominal Impedance (Ω)	50		50		
VSWR	<1.5:1		<1.5:1		
Horizontal beam width, -3 dB (°)	71	67	65	64	64
Vertical beam width, -3 dB (°)	14.9	13.9	13.3	12.6	12
Electrical down tilt (°)	0 - 20		0 - 12		
Side lobe suppression, vertical 1st upper (dB)	>18,17,16,16@ 2,4,8,12	>17,16,15,14@ 2,4,8,12	>17,16,15,14@ 0,4,8,12	>17,16,15,14@ 0,4,8,12	>17,16,15,14@ 0,4,8,12
Isolation between inputs (dB)	>30	>30	>30	>30	>30
Inter band Isolation (dB)	>38		>38		
Tracking, horizontal plane ±60° (dB)	<1	<2	<1.5	<1.2	<4
First null fill (dB)	25	25	25	25	25
Vertical beam squint (°)	0.7	0.7	0.7	1	1
Front to back ratio (dB)	>27	>28	>28	>28	>28
Front to back ratio, total power (dB)	>24	>24	>24	>24	>24
Cross polar discrimination (XPD) 0° (dB)	15	14	16	18	18
Cross polar discrimination (XPD) ±60° (dB)	> 9.3	>7.7	>6	>5.5	> 5.5
Far field coupling	< 0.35	< 0.50	< 0.55	< 0.74	< 0.74
IM3, 2xTx@43dBm (dBc)	<-153		<-153		
IM7, 2xTx@43dBm (dBc)			<-160		
Power handling, average per input (W)	300		250		
Power handling, average total (W)	600		500		

## MECHANICAL SPECIFICATIONS\*

Connector	6x 7/16 DIN Female 4x AISG
Connector position	Bottom
Dimensions, HxWxD, mm (ft)	1408x280x155mm (4'7"x11"x6")
Mounting	Pre-mounted heavy duty brackets
Weight, with brackets, kg (lbs)	18.5 (40.9)
Weight, without brackets, kg (lbs)	13 (28.6)
Wind load, frontal/lateral/rear side 42 m/s Cd=1.6 (N)	415
Maximum operational wind speed, m/s (mph)	42 (93)
Survival wind speed, m/s (mph)	55 (123)
Lightning protection	DC grounded
Operating Temperature	
Radome material	ASA
Package size, HxWxD, mm (ft)	1550x355x200 (5'1"x1'2"x7")
Radome colour	Light Grey
Shipping weight, kg (lbs)	22.5 (49.6)
RET	AISG2.0 (AISG1.1/Ericsson) on RED & WHITE system
Brackets	7256.00, 2210.10, 7454.00A



\*All specifications subject to change without notice. Please contact your Powerwave representative for complete performance data.

## ANTENNA PATTERNS\*

For detailed patterns visit <http://www.powerwave.com/rpa/>.