

8760.0ST.0000.00 i-RET ANTENNA DHBB65 1.3m UXCM-1710-2170-65-18i/18i-Ai-D

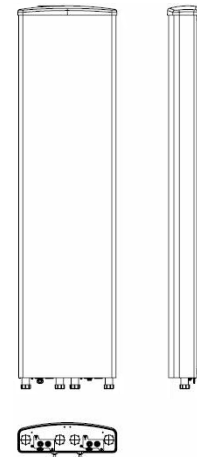
POLARIZATION: XX-Pol
 FREQUENCY (MHz): 1710-2170
 HORIZONTAL BEAM WIDTH (°): 65
 GAIN (dBi dBd): 18.1/16.0
 TILT: 0-10°
 LENGTH: 1.3m (4'3")

ELECTRICAL SPECIFICATIONS*

	1710-2170		
Frequency range (MHz)	1710-2170		
Frequency band (MHz)	1710-1880	1850-1990	1920-2170
Gain (dBi/dBd)	17.7/15.6	17.9/15.8	18.1/16
Polarization	Dual linear $\pm 45^\circ$		
Nominal Impedance (Ω)	50		
VSWR	<1.4:1		
Horizontal beam width, -3 dB (°)	67	65	64
Vertical beam width, -3 dB (°)	7.1	6.8	6.2
Electrical down tilt (°)	0-10		
Side lobe suppression, vertical 1st upper (dB)	>22,20,18,16,14,14@0,2,4,6,8, 10°	>22,20,18,16,14,14@0,2,4,6,8, 10°	>22,20,18,16,14,14@0,2,4,6,8, 10°
Isolation between inputs (dB)	>30	>30	>30
Tracking, horizontal plane $\pm 60^\circ$ (dB)	<2.0	<2.0	<2.0
First null fill (dB)	>-24,typical>-18	>-24,typical>-18	>-24,typical>-18
Vertical beam squint (°)	<2.0	<2.0	<2.0
Front to back ratio (dB) 180° $\pm 30^\circ$ copolar	>28	>28	>28
Front to back ratio (dB) 180° $\pm 30^\circ$ total power	>28	>28	>28
Cross polar discrimination (XPD) 0° (dB)	>16	>16	>20
Cross polar discrimination (XPD) $\pm 60^\circ$ (dB)	>16	>13	>10
Far field coupling			
IM3, 2xTx&43dBm (dBc)	<-153	<-153	<-153
IM7, 2xTx&43dBm (dBc)	<-160	<-160	<-160
Power handling, average per input (W)	250		
Power handling, average total (W)	1000		

MECHANICAL SPECIFICATIONS*

Connector	4 x 7/16 DIN Female
Connector position	Bottom
Dimensions, HxWxD, mm(ft)	1320x343x100 (4'4"x1'1"x3")
Mounting	Pre-mounted heavy duty brackets
Weight, with brackets, kg (lbs)	18.5 (40.8)
Weight, without brackets, kg (lbs)	13 (28.6)
Wind load, frontal/lateral/rear side 42 m/s Cd=1.6 (N)	529 / 63 / 615
Maximum operational wind speed, m/s (mph)	42 (93)
Survival wind speed, m/s (mph)	55 (123)
Lightning protection	DC grounded
Operating Temperature	-40°C to +60°C
Radome Material	ASA
Radome colour	Light Grey
Packing size, HxWxD, mm (ft)	1430x400x200 (4'8"x1'3"x7")
Shipping weight, kg (lbs)	22.5 (49.6)
RET	No iRET module attached [8510.40]
Brackets	7256.00, 7454.00A



*All specifications subject to change without notice. Please contact your Powerwave representative for complete performance data.

ANTENNA PATTERNS*

For detailed patterns visit <http://www.powerwave.com/rpa/>.