

8722.0ST.B100.00

## High Broadband Cross Polarized iRET

POLARIZATION: X-Pol  
 FREQUENCY (MHz): 1710-2170  
 HORIZONTAL BEAM WIDTH (°): 65  
 GAIN (dBi/dBd): 19.5/17.4  
 TILT: Integrated Electrical Tilt (iRET)  
 LENGTH: 2.0, (6'6")

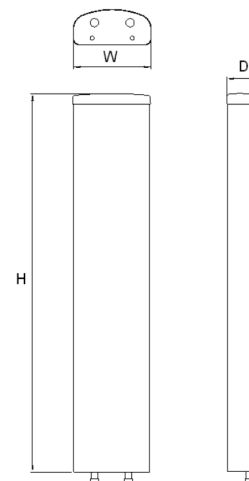
## ELECTRICAL SPECIFICATIONS\*

	1710-2170		
	1710-1880	1850-1990	1920-2170
Frequency range (MHz)	1710-2170		
Frequency band (MHz)	1710-1880	1850-1990	1920-2170
Gain (dBi/dBd)	19/16.9	19.2/17.1	19.5/17.4
Polarization	Dual Linear $\pm 45^\circ$		
Nominal Impedance ( $\Omega$ )	50		
VSWR	<1.4:1		
Horizontal beam width, -3 dB (°)	67	66	65
Vertical beam width, -3 dB (°)	4.7	4.4	4.2
Electrical down tilt (°)	0 to 6		
Side lobe suppression, vertical 1st upper (dB)	>18,18,18,16,16,14,14@0,1,2,3,4,5,6	>18,18,18,16,16,14,14@0,1,2,3,4,5,6	>18,18,18,16,16,14,14@0,1,2,3,4,5,6
Isolation between inputs (dB)	>30	>30	>30
Tracking, horizontal plane $\pm 60^\circ$ (dB)	<1.0	<1.0	<1.0
First null fill (dB)	>-20, typical >-16	>-20, typical >-16	>-20, typical >-16
Vertical beam squint (°)	0.4	0.4	0.4
Front to back ratio (dB)	>30	>30	>30
Front to back ratio, total power (dB)	>27	>27	>27
Cross polar discrimination (XPD) 0° (dB)	>19	>19	>21
Cross polar discrimination (XPD) $\pm 60^\circ$ (dB)	>20	>17	>12
Far field coupling	-	-	-
IM3, 2xTx@43dBm (dBc)	<-153	<-153	-
IM7, 2xTx@43dBm (dBc)	-	-	<-160
Power handling, average per input (W)	250		
Power handling, average total (W)	500		

## MECHANICAL SPECIFICATIONS\*

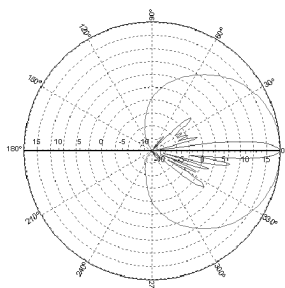
Connector	2x7/16 DIN Female, 1xAISG(M), 1xAISG(F)
Connector position	Bottom
Dimensions, HxWxD, mm (ft)	1934x167x89.5 (6'4"x6"x3")
Mounting	Pre-mounted standard brackets
Weight, with brackets, kg (lbs)	14 (31)
Weight, without brackets, kg (lbs)	8.5 (18.7)
Wind load, frontal/lateral/rear side 42 m/s Cd=1.6 (N)	780
Maximum operational wind speed, m/s (mph)	42 (93)
Survival wind speed, m/s (mph)	55 (123)
Lightning protection	DC grounded
Radome material	ASA
Radome colour	Light Grey
Package size, HxWxD, mm (ft)	2105x200x200 (6'11"x8"x8")
Shipping weight, kg (lbs)	15.5 (34.1)
RET	internal AISG 1.1
Brackets	7456.00A, 2201.11, 7454.00,7455.00, 7458.00

\*All specifications subject to change without notice. Please contact your Powerwave representative for complete performance data.



## ANTENNA PATTERNS\*

For detailed patterns visit <http://www.powerwave.com/rpa/>.



2140 MHz