

8722.0ST.0000.00

## i-RET ANTENNA HBB65 1.9m UXM-1710-2170-65-19.5i-Ai-D

POLARIZATION: X-Pol  
 FREQUENCY (MHz): 1710-2170  
 HORIZONTAL BEAM WIDTH (°): 65  
 GAIN (dBi dBd): 19.5/17.4  
 TILT: 0-6°  
 LENGTH: 2.0m(6'6")

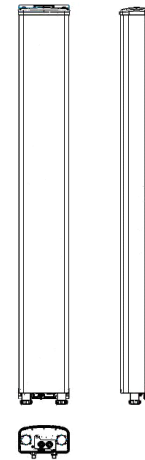
### ELECTRICAL SPECIFICATIONS\*

Frequency range (MHz)	1710-2170		
Frequency band (MHz)	1710-1880	1850-1990	1920-2170
Gain (dBi/dBd)	19.0/16.9	19.2/17.1	19.5/17.4
Polarization	Dual Linear ±45°		
Nominal Impedance (Ω)	50		
VSWR	<1.4:1		
Horizontal beam width, -3 dB (°)	67	66	65
Vertical beam width, -3 dB (°)	4.7	4.4	4.2
Electrical down tilt (°)	0-6		
Side lobe suppression, vertical 1st upper (dB)	>18,18,18,16,16,14,14@0,1,2,3,4,5,6	>18,18,18,16,16,14,14@0,1,2,3,4,5,6	>18,18,18,16,16,14,14@0,1,2,3,4,5,6
Isolation between inputs (dB)	>30	>30	>30
Tracking, horizontal plane ±60° (dB)	<1.0	<1.0	<1.0
First null fill (dB)	>-20, typical >-16	>-20, typical >-16	>-20, typical >-16
Vertical beam squint (°)	0.4	0.4	0.4
Front to back ratio (dB) 180° ±30° copolar	>30	>30	>30
Front to back ratio (dB) 180° ±30° total power	>27	>27	>27
Cross polar discrimination (XPD) 0° (dB)	>19	>19	>21
Cross polar discrimination (XPD) ±60° (dB)	>20	>17	>12
Far field coupling			
IM3, 2xTx&43dBm (dBc)	<-153	<-153	
IM7, 2xTx&43dBm (dBc)			<-160
Power handling, average per input (W)	250		
Power handling, average total (W)	500		

No iRET module attached [8510.40]

### MECHANICAL SPECIFICATIONS\*

Connector	2x 7/16 DIN Female
Connector position	Bottom
Dimensions, HxWxD, mm(ft)	1934 x 167 x 89.5 (6'4" x 6" x 3")
Mounting	Pre-mounted standard brackets
Weight, with brackets, kg (lbs)	13.5 (29.7)
Weight, without brackets, kg (lbs)	8 (17.6)
Wind load, frontal/lateral/rear side 42 m/s Cd=1.6 (N)	423 / 90 / 494
Maximum operational wind speed, m/s (mph)	42 (93)
Survival wind speed, m/s (mph)	55 (123)
Lightning protection	DC Grounded
Operating Temperature	-40°C to +60°C
Radome Material	ASA
Radome colour	Light Gray
Packing size, HxWxD, mm (ft)	2105 x 200 x 200 (6'11" x 8" x 8")
Shipping weight, kg (lbs)	15 (33)
RET	No iRET module attached
Brackets	7456.00A,7454.00A,7455.00,7458.00A



\*All specifications subject to change without notice. Please contact your Powerwave representative for complete performance data.

### ANTENNA PATTERNS\*

For detailed patterns visit <http://www.powerwave.com/rpa/>.