

8721.0ST.B400.00

**i-RET ANTENNA HBB65 1.3m UXM-1710-2170-65-18i-Ai-D**

POLARIZATION: X-Pol  
 FREQUENCY (MHz): 1710-2170  
 HORIZONTAL BEAM WIDTH (°): 65  
 GAIN (dBi/dBd): 18.3/16.2  
 TILT: 0-10°  
 LENGTH: 1.3m(4'3")

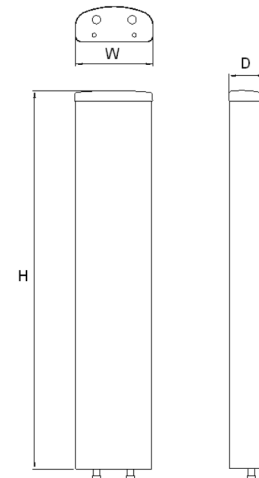
**ELECTRICAL SPECIFICATIONS\***

Frequency range (MHz)	1710-2170		
Frequency band (MHz)	1710-1880	1850-1990	1920-2170
Gain (dBi/dBd)	17.6/15.5	18.0/15.9	18.3/16.2
Polarization	Dual linear $\pm 45^\circ$		
Nominal Impedance ( $\Omega$ )	50		
VSWR	<1.4:1		
Horizontal beam width, -3 dB (°)	67	66	64
Vertical beam width, -3 dB (°)	7.0	6.6	6.3
Electrical down tilt (°)	0-10		
Side lobe suppression, vertical 1st upper (dB)	>18,18,16,16,14,12 @ 0,2,4,6,8,10	>18,18,16,16,14,12 @ 0,2,4,6,8,10	>18,18,16,16,14,12 @ 0,2,4,6,8,10
Isolation between inputs (dB)	>30	>30	>30
Tracking, horizontal plane $\pm 60^\circ$ (dB)	<1.0	<1.0	<1.0
First null fill (dB)	>-24 typical >-17	>-24 typical >-17	>-24 typical >-17
Vertical beam squint (°)	0.5	0.5	0.5
Front to back ratio (dB)	>30	>30	>30
Front to back ratio, total power (dB)	>27	>27	>27
Cross polar discrimination (XPD) 0° (dB)	>17	>17	>20
Cross polar discrimination (XPD) $\pm 60^\circ$ (dB)	>18	>14	>12
Far field coupling			
IM3, 2xTx@43dBm (dBc)	<-153	<-153	
IM7, 2xTx@43dBm (dBc)			<-160
Power handling, average per input (W)	250		
Power handling, average total (W)	500		

**MECHANICAL SPECIFICATIONS\***

Connector	2x 7/16 DIN Female 2x AISG
Connector position	Bottom
Dimensions, HxWxD, mm (ft)	1309x167x89.5 mm (4'3"x6"x3")
Mounting	Pre-mounted standard brackets
Weight, with brackets, kg (lbs)	11(24)
Weight, without brackets, kg (lbs)	7.3(16)
Wind load, frontal/lateral/rear side 42 m/s Cd=1.6 (N)	281
Maximum operational wind speed, m/s (mph)	42 (93)
Survival wind speed, m/s (mph)	55 (123)
Lightning protection	DC grounded
Radome material	ASA
Radome colour	Light Grey
Package size, HxWxD, mm (ft)	1480x200x200mm (4'10"x8"x8")
Shipping weight, kg (lbs)	14.7 (32.4)
RET	AISG2.0 (AISG1.1/Ericsson)
Brackets	7456.00, 2201.11, 7454.00, 7455.00, 7458.00

\*All specifications subject to change without notice. Please contact your Powerwave representative for complete performance data.

**ANTENNA PATTERNS\***

For detailed patterns visit <http://www.powerwave.com/rpa/>.