

8720.0ST.B400.00**i-RET ANTENNA HBB65 0.7m UXM-1710-2170-65-15i-Ai-D**

POLARIZATION: X-Pol
 FREQUENCY (MHz): 1710-2170
 HORIZONTAL BEAM WIDTH (°): 65
 GAIN (dBi/dBd): 15.6/13.5
 TILT: 0-16°
 LENGTH: 0.7m(2'3")

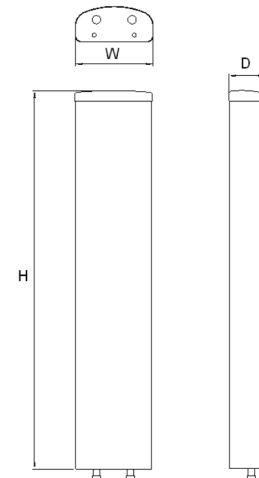
ELECTRICAL SPECIFICATIONS*

Frequency range (MHz)	1710-2170		
Frequency band (MHz)	1710-1880	1850-1990	1920-2170
Gain (dBi/dBd)	15/12.9	15.1/13	15.6/13.5
Polarization	Dual Linear $\pm 45^\circ$		
Nominal Impedance (Ω)	50		
VSWR	<1.4:1		
Horizontal beam width, -3 dB (°)	67	65	64
Vertical beam width, -3 dB (°)	14.1	13.5	12.5
Electrical down tilt (°)	0-16		
Side lobe suppression, vertical 1st upper (dB)	>17,16,16,15,15@0,4,8,12,16	>17,16,16,15,15@0,4,8,12,16	>17,16,16,15,15@0,4,8,12,16
Isolation between inputs (dB)	>30	>30	>30
Tracking, horizontal plane $\pm 60^\circ$ (dB)	<1.5	<1.5	<1.5
First null fill (dB)	>-29, typical >-25	>-29, typical >-25	>-29, typical >-25
Vertical beam squint (°)	0.5	0.5	0.5
Front to back ratio (dB)	>30	>30	>30
Front to back ratio, total power (dB)	>25	>25	>25
Cross polar discrimination (XPD) 0° (dB)	>15	>15	>15
Cross polar discrimination (XPD) $\pm 60^\circ$ (dB)	>15	>15	>13
Far field coupling			
IM3, 2xTx@43dBm (dBc)	<-153	<-153	
IM7, 2xTx@43dBm (dBc)			<-160
Power handling, average per input (W)	250		
Power handling, average total (W)	500		

MECHANICAL SPECIFICATIONS*

Connector	2 x 7/16 DIN Female 2x AISG
Connector position	Bottom
Dimensions, HxWxD, mm (ft)	709x167x89.5 (2'3"x6"x3")
Mounting	Pre-mounted standard brackets
Weight, with brackets, kg (lbs)	8.2 (18)
Weight, without brackets, kg (lbs)	4.5 (9.9)
Wind load, frontal/lateral/rear side 42 m/s Cd=1.6 (N)	130
Maximum operational wind speed, m/s (mph)	42 (93)
Survival wind speed, m/s (mph)	70 (156)
Lightning protection	DC Grounded
Radome material	ASA
Radome colour	Light Grey
Package size, HxWxD, mm (ft)	880x200x200 (2'11"x8"x8")
Shipping weight, kg (lbs)	11.5 (25.3)
RET	AISG2.0 (AISG1.1/Ericsson)
Brackets	7456.00A, 2201.11, 7454.00, 7455.00, 7458.00

*All specifications subject to change without notice. Please contact your Powerwave representative for complete performance data.

**ANTENNA PATTERNS***

For detailed patterns visit <http://www.powerwave.com/rpa/>.