

7721.06

## High Broadband Cross Polarized

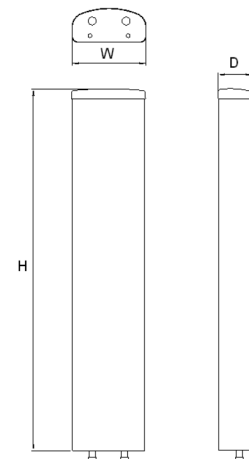
POLARIZATION: X-Pol  
 FREQUENCY (MHz): 1710-2170  
 HORIZONTAL BEAM WIDTH (°): 65  
 GAIN (dBi dBd): 18.0/15.9  
 TILT: 6-14°  
 LENGTH: 1.3m (4'3")

## ELECTRICAL SPECIFICATIONS\*

Frequency range (MHz)	1710-2170		
Frequency band (MHz)	1710-1880	1850-1990	1920-2170
Gain (dBi/dBd)	17.5/15.4	17.8/15.7	18.0/15.9
Polarization	Dual linear $\pm 45^\circ$		
Nominal Impedance ( $\Omega$ )	50		
VSWR	<1.4:1		
Horizontal beam width, -3 dB (°)	67	66	64
Vertical beam width, -3 dB (°)	7.3	6.9	6.6
Electrical down tilt (°)	6-14		
Side lobe suppression, vertical 1st upper (dB)	>19,19,18,17,16@6,8,10,12,14°	>20,20,20,19,18@6,8,10,12,14°	>20,20,20,19,18@6,8,10,12,14°
Isolation between inputs (dB)	>30	>30	>30
Tracking, horizontal plane $\pm 60^\circ$ (dB)	<2	<2	<2
First null fill (dB)	>-24,typical>-18	>-24,typical>-18	>-24,typical>-18
Vertical beam squint (°)	0.5	0.5	0.5
Front to back ratio (dB) 180° $\pm 30^\circ$ copolar	>30	>30	>30
Front to back ratio (dB) 180° $\pm 30^\circ$ total power	>27	>27	>27
Cross polar discrimination (XPD) 0° (dB)	>17	>19	>20
Cross polar discrimination (XPD) $\pm 60^\circ$ (dB)	>18	>14	>12
Far field coupling	-	-	-
IM3, 2xTx&43dBm (dBc)	<-153	<-153	-
IM7, 2xTx&43dBm (dBc)	-	-	<-160
Power handling, average per input (W)	250		
Power handling, average total (W)	500		

## MECHANICAL SPECIFICATIONS\*

Connector	2 x 7/16 DIN Female
Connector position	Bottom
Dimensions, HxWxD, mm(ft)	1309x167x89.5 (4'3"x6"x3")
Mounting	Pre-mounted standard brackets
Weight, with brackets, kg (lbs)	9.7 (21.3)
Weight, without brackets, kg (lbs)	6 (13.2)
Wind load, frontal/lateral/rear side 42 m/s Cd=1.6 (N)	281
Maximum operational wind speed, m/s (mph)	42 (93)
Survival wind speed, m/s (mph)	55 (123)
Lightning protection	DC grounded
Operating Temperature	-40°C to +60°C
Radome Material	ASA
Radome colour	Light Grey
Packing size, HxWxD, mm (ft)	1480x200x200 (4'10"x8"x8")
Shipping weight, kg (lbs)	13.5 (29.7)
RET	8110.40, 8110.10
Brackets	7456.00A, 7454.00, 7455.00, 7458.00



\*All specifications subject to change without notice. Please contact your Powerwave representative for complete performance data.

## ANTENNA PATTERNS\*

For detailed patterns visit <http://www.powerwave.com/rpa/>.