

7701.1ST.0000.01

High Broadband Cross Polarized

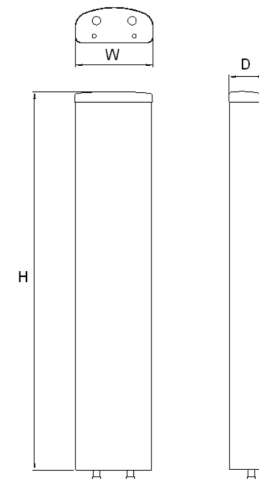
POLARIZATION: X-Pol
 FREQUENCY (MHz): 1710-2170
 HORIZONTAL BEAM WIDTH (°): 65
 GAIN (dBi/dBd): 18/15.9
 TILT: FET
 LENGTH: 1.3

ELECTRICAL SPECIFICATIONS*

Frequency range (MHz)	1710-2170		
	1710-1880	1850-1990	1920-2170
Frequency band (MHz)			
Gain (dBi/dBd)	17.0 14.9		18 15.9
Polarization	Dual Slant +/- 45		
Nominal Impedance (Ω)	50		
VSWR	1.3:1		
Horizontal beam width, -3 dB (°)	67	66	65
Vertical beam width, -3 dB (°)	7.2	6.7	6.4
Electrical down tilt (°)	2		
Side lobe suppression, vertical 1st upper (dB)	>20		
Isolation between inputs (dB)	>30		
Tracking, horizontal plane $\pm 60^\circ$ (dB)	<1.0		
First null fill (dB)	>13		
Vertical beam squint (°)	0.5		
Front to back ratio (dB)	>30		
Front to back ratio, total power (dB)	>30		
Cross polar discrimination (XPD) 0° (dB)	>17	>17	>20
Cross polar discrimination (XPD) $\pm 60^\circ$ (dB)	>17	>14	>11
Far field coupling			
IM3, 2xTx@43dBm (dBc)	<-150	<-150	<-150
IM7, 2xTx@43dBm (dBc)			<-160
Power handling, average per input (W)	350		
Power handling, average total (W)	700		

MECHANICAL SPECIFICATIONS*

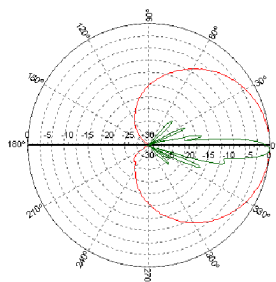
Connector	7/16 DIN Female
Connector position	Bottom
Dimensions, HxWxD, mm (ft)	1309x167x89.5
Mounting	
Weight, with brackets, kg (lbs)	10.1
Weight, without brackets, kg (lbs)	
Wind load, frontal/lateral/rear side 42 m/s Cd=1.6 (N)	54
Maximum operational wind speed, m/s (mph)	
Survival wind speed, m/s (mph)	70
Lightning protection	DC Grounded
Radome material	ASA
Radome colour	Light Grey
Package size, HxWxD, mm (ft)	1480x200x200
Shipping weight, kg (lbs)	11
RET	
Brackets	



*All specifications subject to change without notice. Please contact your Powerwave representative for complete performance data.

ANTENNA PATTERNS*

For detailed patterns visit <http://www.powerwave.com/rpa/>.



2140 MHz