

7701.00

## High Broadband Cross Polarized

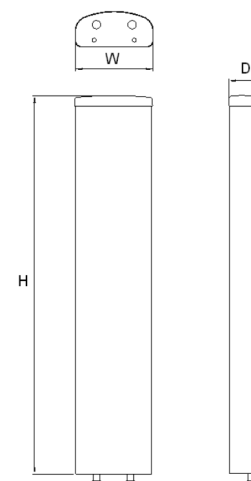
POLARIZATION: x-pol  
 FREQUENCY (MHz): 1710-2170  
 HORIZONTAL BEAM WIDTH (°): 65  
 GAIN (dBi/dBd): 18.2/16.1  
 TILT: FET  
 LENGTH: 1.3m (4'3")

## ELECTRICAL SPECIFICATIONS\*

Frequency range (MHz)	1710-2170		
	1710-1880	1850-1990	1920-2170
Frequency band (MHz)	1710-1880	1850-1990	1920-2170
Gain (dBi/dBd)	17.5/15.4		18.2/16.1
Polarization	Dual linear $\pm 45^\circ$		
Nominal Impedance ( $\Omega$ )	50		
VSWR	<1.3:1		
Horizontal beam width, -3 dB (°)	67	66	64
Vertical beam width, -3 dB (°)	7.2	6.7	6.4
Electrical down tilt (°)	0		
Side lobe suppression, vertical 1st upper (dB)	>20	>20	
Isolation between inputs (dB)	>30	>30	>30
Tracking, horizontal plane $\pm 60^\circ$ (dB)	<1.0	<1.0	<1.0
First null fill (dB)	>-20, typical >-18	>-20, typical >-18	>-20, typical >-18
Vertical beam squint (°)	0.5	0.5	0.5
Front to back ratio (dB)	>30	>30	>30
Front to back ratio, total power (dB)	>27	>27	>27
Cross polar discrimination (XPD) $0^\circ$ (dB)	>17	>17	>20
Cross polar discrimination (XPD) $\pm 60^\circ$ (dB)	>17	>14	>11
Far field coupling	-	-	-
IM3, 2xTx@43dBm (dBc)	<-153	<-150	-
IM7, 2xTx@43dBm (dBc)	-	-	<-160
Power handling, average per input (W)	250		
Power handling, average total (W)	500		

## MECHANICAL SPECIFICATIONS\*

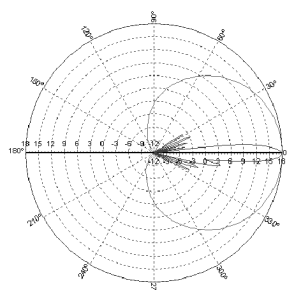
Connector	2 x 7/16 DIN Female
Connector position	Bottom
Dimensions, HxWxD, mm (ft)	1309x167x89.5 (4'3"x6"x3")
Mounting	Pre-mounted standard brackets
Weight, with brackets, kg (lbs)	7.7 (16.9)
Weight, without brackets, kg (lbs)	4 (8.8)
Wind load, frontal/lateral/rear side 42 m/s Cd=1.6 (N)	528
Maximum operational wind speed, m/s (mph)	42 (93)
Survival wind speed, m/s (mph)	55 (123)
Lightning protection	DC grounded
Radome material	ASA
Radome colour	Light Grey
Package size, HxWxD, mm (ft)	1480x200x200 (4'10"x8"x8")
Shipping weight, kg (lbs)	11.5 (25.3)
RET	-
Brackets	7456.00A, 2201.11, 7454.00, 7455.00, 7458.00



\*All specifications subject to change without notice. Please contact your Powerwave representative for complete performance data.

## ANTENNA PATTERNS\*

For detailed patterns visit <http://www.powerwave.com/rpa/>.



2140 MHz