

**7330.00B ALXC Cross Polarized**

POLARIZATION: X-Pol  
 FREQUENCY (MHz): 870-960, 1710-1880  
 HORIZONTAL BEAM WIDTH (°): 65  
 GAIN (dBi/dBd): 15.5/13.4, 17.5/15.4  
 TILT: FET  
 LENGTH: 1.5m (4'11")

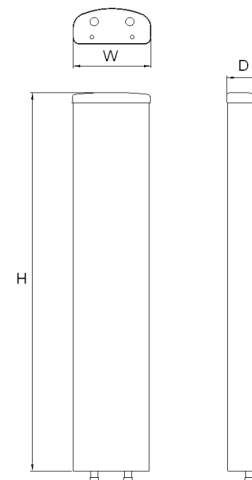
**ELECTRICAL SPECIFICATIONS\***

	870-960	1710-1880
Frequency range (MHz)	870-960	1710-1880
Frequency band (MHz)	870-960	1710-1880
Gain (dBi/dBd)	15.5/13.4	17.5/15.4
Polarization	Dual linear slanted	
Nominal Impedance (Ω)	50	
VSWR	<1.5:1	<1.5:1
Horizontal beam width, -3 dB (°)	67	66
Vertical beam width, -3 dB (°)	13.4	7
Electrical down tilt (°)	0	0
Side lobe suppression, vertical 1st upper (dB)	>16	>16
Isolation between inputs (dB)	>30	>30
Inter band Isolation (dB)	>30	>30
Tracking, horizontal plane ±60° (dB)	<2.0	<2.0
First null fill (dB)	>-20	>-20
Vertical beam squint (°)	<0.5	<0.5
Front to back ratio (dB)	>26	>26
Front to back ratio, total power (dB)	>26	>26
Cross polar discrimination (XPD) 0° (dB)	>13	>13
Cross polar discrimination (XPD) ±60° (dB)	>12	>13
IM3, 2xTx@43dBm (dBc)	>-150	>-150
Power handling, average per input (W)	300	300
Power handling, average total (W)	600	600

**MECHANICAL SPECIFICATIONS\***

Connector	2 x 7/16 DIN Female
Connector position	Bottom
Dimensions, HxWxD, mm (ft)	1450x280x125 (4'9"x11"x5")
Mounting	Pre-mounted heavy duty brackets
Weight, with brackets, kg (lbs)	12.6 (27.7)
Weight, without brackets, kg (lbs)	7.1 (15.6)
Wind load, frontal/lateral/rear side 42 m/s Cd=1.6 (N)	430
Maximum operational wind speed, m/s (mph)	42 (93)
Survival wind speed, m/s (mph)	55 (123)
Lightning protection	DC grounded
Radome material	GRP
Radome colour	Light gray
Package size, HxWxD, mm (ft)	1620x355x255 (5'4"x1'2"x10")
Shipping weight, kg (lbs)	15.3 (13.7)
RET	-
Brackets	7256.00, 7454.00, 2210.10

\*All specifications subject to change without notice. Please contact your Powerwave representative for complete performance data.

**ANTENNA PATTERNS\***

For detailed patterns visit <http://www.powerwave.com/rpa/>.